



North American Clutch & Driveline

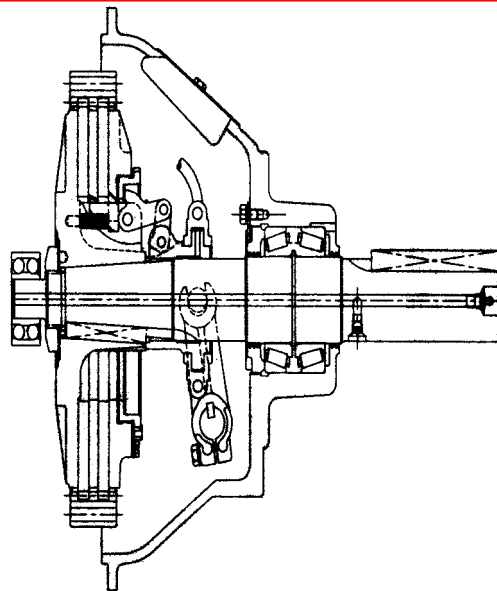
AIR BURNERS, INC.

S-300 Series w/Kubota V3300 uses NACD Clutch Model 434510AM

S-300 Series w/Kubota V3600 uses NACD Clutch Model 411256AM

S-200 Series w/Kubota Engines uses NACD Clutch Model 411238AM

S-100 Series w/Kubota Engines uses NACD Clutch Model 411238AM



NACD Power Take-Off Service Manual

6.5", 7.5", 8", 10" and 11.5" HE Clutches

Includes Installation, Operation, Maintenance and Overhaul Instructions

NOTICE

IMPORTANT INFORMATION

It is imperative that proper installation, maintenance, operation and safety procedures be followed explicitly regarding products provided by North American Clutch and Driveline.

GENERAL:

Safe working and operating practices must be employed by all personnel working on, with, or near NACD products. NACD will not be responsible for personal injury.

SAFETY NOTICE:

Accidents may result from use of manufactured products, resulting in possible danger to person(s) or property. Therefore, it is important and imperative that correct, safe procedures be followed. Products must be installed, maintained, operated and used in accordance with the engineering information specified. Continual and repeated inspections and observations should be employed as necessary to assure that safe operations and a safe environment exist under prevailing conditions. Use proper guards and other suitable safety equipment, devices and procedures that may be desirable or specified in safety codes, or as necessary to prevent accidental injury to person(s) or property. These devices are neither provided by NACD nor are they the responsibility of NACD.

OWNER / OPERATOR / USER RESPONSIBILITIES:

Knowledge of and performance of the procedures specified in this publication are the responsibility of the owner(s), operator(s), user(s) and all person(s) working on or near the products described herein. Following these procedures and explicit adherence to the information described should ensure safe and reliable use, repair, and operation of products provided by NACD.

WARRANTY:

NACD's limited Warranty is described in detail in this publication. It is the responsibility of the original purchaser or manufacturer, successive buyers, users, third parties or employees to make themselves aware of this warranty and all conditions it contains.

Table of Contents

1.0 Introduction	5
1.1 Part numbering system	5
1.2 Locating the part number and serial number	5
2.0 General Information, Specifications & Recommendations	6
2.1 Basic dimensions for SAE housings	6
2.2 Basic dimensions for SAE flywheels	6
2.3 Application guidelines (side load vs. in-line)	7
2.4 Allowable side load pulls	7
2.5 Maximum safe operating speed	14
2.6 Required clutch torque capacity for an application	14
2.7 Alignment tolerances for flywheels & flywheel housings	15
3.0 Maintenance	17
3.1 Lubrication requirements	17
3.1.a Grease specifications	17
3.1.b Grease specification for special conditions	17
3.2 Lubrication intervals	17
3.3 Bearing operating temperature	18
3.4 Methods of measuring clutch engagement force	19
3.4.a Torque wrench method (preferred method)	19
3.4.b Spring scale method using standard handle	20
3.4.c Spring scale method using altered handle length	21
3.5 Clutch adjustment procedure	21
4.0 Installation information	22
4.1 Preparation	22
4.2 Flywheel and flywheel housing alignment checks	22
4.3 Lubrication required before installation	22
4.4 Install the PTO on the engine	23
4.5 Correct handle installation position	24
4.6 Check clutch engagement pressure	24
4.7 Outboard bearing shimming and alignment	25
5.0 Operation	
5.1 Clutch engagement procedure	26
6.0 Typical Power Take-Off List of Parts & Exploded View	27
6.1 SAE housing size 4, 5, 6 w/ 6.5" or 7.5" clutch	27
6.2 SAE housing size 4 w/ 10" clutch	29
6.3 SAE housing size 1, 2, 3 w/ 8", 10" or 11.5" clutch	31
6.4 SAE housing size 1, 2, 3 w/ 11.5" clutch	33
6.5 Universal bill of materials	35
7.0 Disassemble the Power Take-Off	36
7.1 Removing accessories attached to the PTO	36
7.2 Remove the PTO from the engine	36
7.3 Remove the clutch from the shaft	36
7.4 Remove the shaft and bearings from the bearing housing	38
7.5 Remove the main bearings from the shaft	38
7.6 Remove the cross shaft	39
8.0 Inspect the Power Take-Off Components	39

Table of Contents continued

9.0 Disassemble the Clutch	41
9.1 Preparation for disassembly	41
9.2 Remove the release sleeve and bearing assembly	41
9.3 Disassemble the sleeve and bearing assembly	42
9.4 Remove the levers	43
9.5 Remove and disassemble the pressure plate assembly	43
9.6 Complete the disassembly of the clutch	43
10.0 Inspect the Clutch Components	43
11.0 Assemble the Clutch	46
11.1 Assemble the sleeve and bearing assembly	46
11.2 Assemble the clutch body assembly	48
11.3 Install the release levers	48
11.4 Install the release sleeve and bearing assembly	49
12.0 Assemble the Power Take-Off	50
12.1 Install the main bearings on the drive shaft	50
12.2 Install the drive shaft in the bearing housing	52
12.3 Install the cross shaft and clutch release yoke	53
12.4 Complete the assembly of the housing unit	54
13.0 Adjust the Main Bearing End Play	54
14.0 Install the Clutch On the Drive Shaft	56
15.0 Troubleshooting Guide	58
16.0 Warranty	59

1.0 INTRODUCTION

Performance of the following procedures by the owner and operator should ensure reliable PTO operation.

1.1 Part Numbering System

NACD Power Take-Off part numbers have changed in the way they were displayed in print over the years, primarily due to advances in technology.

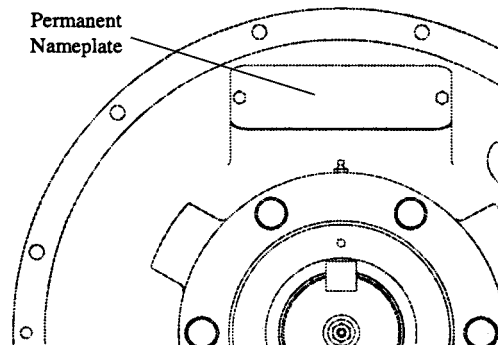
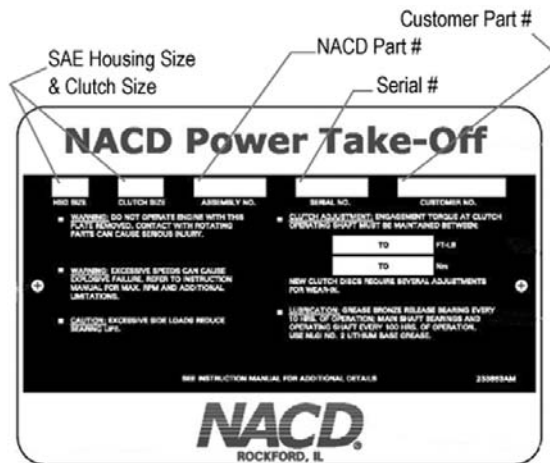
The part number format for an NACD Power Take-Off is 4XXXXXAM, where XXXXX is a 5 digit alpha number unique to that particular assembly. Sub-assemblies or Kits are designated 3XXXXXAM and individual components are designated 2XXXXXAM, where XXXXX is a 5-digit alpha number unique to that particular sub-assembly, kit or component.

Previous numbers may have been displayed as:

4-XXXXX, 40XXXXX, 04-XXXXX, or 4-0XXXXX. The unique 5-digit number remains unchanged, regardless of how the prefix may have been written at one time or another.

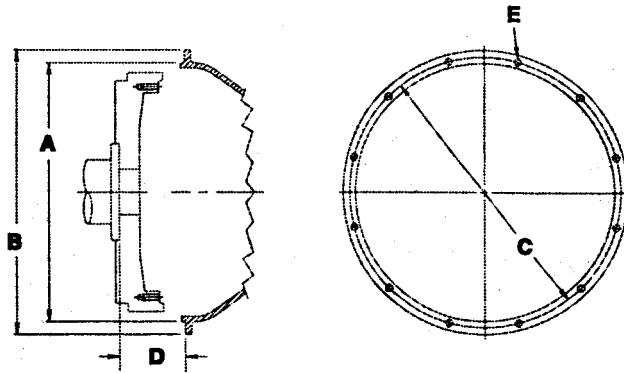
1.2 Locating the Part Number and Serial Number

Refer to the nameplate for part number and serial number information. The serial number will be stamped into the bell housing in the location shown in the bottom picture.



2.0 GENERAL INFORMATION, SPECIFICATIONS & RECOMMENDATIONS

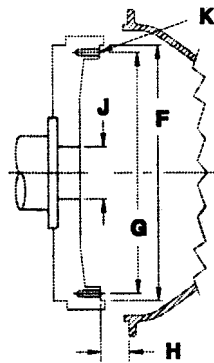
2.1 Basic Dimensions for SAE Housings



SAE Hsg No.	Pilot Diam.	O.D.	Bolt Circle	(See Note Below)	Flywheel Housing Bolts & Bolt Holes "E"		
	"A"	"B"	"C"	"D"	Qty	Hole Dia.	Bolt Size
"1"	20.125	21.75	20.875	3.94	12	.484	7/16
"2"	17.625	19.25	18.375	3.94	12	.433	3/8
"3"	16.125	17.75	16.875	3.94	12	.433	3/8
"4"	14.250	15.88	15.000	*	12	.433	3/8
"5"	12.375	14.00	13.125	*	8	.433	3/8
"6"	10.500	12.12	11.250	2.81	8	.433	3/8

All dimensions are in inches unless otherwise specified.
 * 3.94 for 8" clutch; 2.81 for 6" and 7" clutch.
 "D" = Depth of pilot bore from housing face to shoulder on flywheel or to crankshaft flange face.

2.2 Basic Dimensions for SAE Flywheels



Clutch Size	Drive Ring Pilot	Bolt Circle	Housing Face to Flywheel	Pilot Bearing Bore	Bolt Hole "K"	
	"F"	"G"	"H"	"J"	Qty	Size
6.5"	8.500	7.875	1.19	2.0472 (52mm)	6	5/16
7.5"	9.500	8.750	1.19	2.0472 (52mm)	8	5/16
8"	10.375	9.625	2.44	2.4409 (62mm)	6	3/8
10"	12.375	11.625	2.12	2.8346 (72mm)	8	3/8
11.5"	13.875	13.125	1.56	2.8346 (72mm)	8	3/8

All dimensions in inches unless otherwise noted.

2.3 Application Guidelines

2.3.a In-line (torsional) vs. side loaded applications

NACD Power Take-Offs with 6.5" HE, 7.5" HE, 8" HE, 10" HE, 11.5" HE, and 11.5" HE(DP) clutches are approved for either in-line drive or side-loaded applications within allowable limits.

2.3.b Segmented facings in 2-plate (DP) clutches

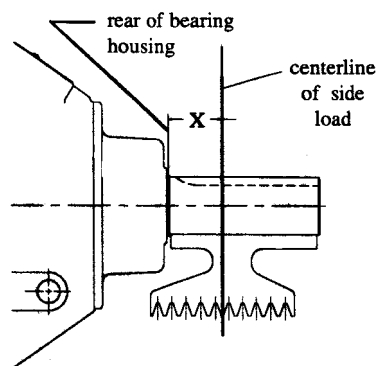
NACD does not approve the use of segmented facings in 2-plate (DP) clutches.

2.4 Allowable Side Load Pulls

The following formula can be used to estimate applied side loads. Loads are calculated on proper tensioning of belts. If belts are tightened excessively, the resulting side load can exceed the calculated value. If belts are under-tightened, belt "whip" and other resultant factors can cause intermittent side load pulls which exceed allowable limits.

$$L = \frac{126000 \times \text{H.P.}}{N \times D} \times F \times A$$

L = predicted side load
H.P. = horsepower
N = shaft speed (rev./min.)
D = pitch dia. of pulley (in)
F = load factor (see below)
 1.0 for chain or gear drive
 2.5 for V-belt drive
 3.5 for flat belt drive
A = 1.0 for low & moderate duty drives
 1.4 for severe shock loads or large inertia loads (reciprocating compressors, crushers, chippers, planers, etc.)



Note: Side load charts are not furnished for some Power Take-Offs because the pilot bearing is provided by the customer. Pilot bearing size and type are integral to allowable side load pull calculations. Therefore allowable side load charts cannot be furnished unless bearing information is known.

NACD's Application Engineering Department can furnish side load charts for those Power Take-Off part numbers if the exact pilot bearing information is furnished.

The following charts list allowable side load pulls. For Power Take-Off part numbers not listed, contact NACD for assistance.

6.5" Power Take-Off Part Numbers 411236AM, 411294AM

RPM	<i>X" Distance</i>			
	0	1"	2"	3"
1600	904	804	724	658
1900	854	759	683	621
2200	813	723	651	592
2500	779	693	624	567
2800	750	667	601	546
3100	725	645	581	528

6.5" Power Take-Off Part Numbers 430378AM

RPM	<i>X" Distance</i>			
	0	1"	2"	3"
2000	1123	998	899	769
2400	1057	939	846	724
2800	1004	892	803	687
3200	960	853	768	657
3600	923	821	739	632

6.5" Power Take-Off Part Numbers 411294T, 411294T750

RPM	<i>X" Distance</i>			
	0	1"	2"	3"
1600	1350	1225	1030	820
1900	1300	1175	995	790
2200	1250	1125	960	760
2500	1200	1075	925	730
2800	1150	1025	890	700
3100	1100	975	855	670

7.5" Power Take-Off Part Numbers 411238AM, 411298AM

RPM	<i>X" Distance</i>			
	0	1"	2"	3"
1600	904	804	724	658
1900	854	759	683	621
2200	813	723	651	592
2500	779	693	624	567
2800	750	667	601	546
3100	725	645	581	528

7.5" Power Take-Off Part Number 436271AM

RPM	<i>X" Distance</i>			
	0	1"	2"	3"
1900	960	854	769	694
2200	914	813	733	661
2500	876	779	702	633
2800	844	751	676	610
3100	815	726	654	589

7.5" Power Take-Off Part Numbers 411298T, 411298T750, 411238T, 411238T750

RPM	<i>X" Distance</i>			
	0	1"	2"	3"
1600	1350	1225	1030	820
1900	1300	1175	995	790
2200	1250	1125	960	760
2500	1200	1075	925	730
2800	1150	1025	890	700
3100	1100	975	855	670

8" Power Take-Off Part Numbers 411244AM

RPM	<i>X" Distance</i>							
	0	1"	2"	3"	4"	5"	6"	7"
2000	1146	1033	941	791	633	528	453	397
2400	1078	972	886	744	596	497	427	373
2800	1024	924	841	707	566	472	405	355
3200	979	883	805	676	542	452	388	339

8" Power Take-Off Part Numbers 411247AM, 426048AM

RPM	<i>X" Distance</i>				
	0	1"	2"	3"	4"
2000	1110	1000	910	840	770
2400	1050	940	860	790	730
2800	990	900	810	750	690
3200	950	860	780	710	660

8" Power Take-Off Part Numbers 424838AM

RPM	<i>X" Distance</i>							
	0	1"	2"	3"	4"	5"	6"	7"
2000	959	858	776	661	531	444	381	334
2400	902	807	731	622	500	418	359	315
2800	857	767	694	591	475	397	341	299
3200	820	734	664	565	454	380	326	286

8" Power Take-Off Part Numbers 430973AM, 430974AM, 430985AM, 436573AM

RPM	<i>X" Distance</i>						
	0	1"	2"	3"	4"	5"	6"
2000	3220	1990	1440	1130	930	790	680
2400	3030	1870	1350	1060	870	740	640
2800	2800	1780	1290	1010	830	700	610
3200	2750	1700	1230	960	790	670	580

8" Power Take-Off Part Numbers 430982AM

RPM	<i>X" Distance</i>							
	0	1"	2"	3"	4"	5"	6"	7"
1600	2430	1502	1087	852	700	595	517	457
1900	2294	1419	1027	805	661	561	488	431
2200	2185	1351	978	766	630	535	465	411
2500	2094	1295	937	734	604	512	445	394
2800	2016	1247	902	707	581	493	429	379
3100	1949	1205	872	683	562	477	414	366

8" Power Take-Off Part Numbers 431026AM, 434015AM

RPM	<i>X" Distance</i>							
	0	1"	2"	3"	4"	5"	6"	7"
2000	3209	1984	1436	1125	925	785	682	603
2400	3019	1867	1351	1059	870	739	642	567
2800	2868	1773	1284	1006	827	702	610	539
3200	2743	1696	1228	962	791	671	583	516

8" Power Take-Off Part Numbers 431427AM

RPM	<i>X" Distance</i>						
	0	1"	2"	3"	4"	5"	6"
2000	780	720	660	610	570	530	500
2400	740	670	620	570	540	500	470
2800	700	640	590	550	510	480	450
3200	670	610	560	520	490	450	430

10" Power Take-Off Part Numbers 411256AM, 411174AM

RPM	<i>X" Distance</i>							
	0	1"	2"	3"	4"	5"	6"	7"
1600	4859	4484	3978	3160	2620	2238	1954	1733
1900	4588	4234	3757	2984	2475	2114	1845	1637
2200	4369	4032	3578	2841	2357	2013	1757	1559
2500	4187	3864	3428	2723	2258	1929	1684	1494
2800	4932	3721	3301	2622	2175	1858	1621	1438
3100	3897	3597	3191	2535	2102	1796	1567	1390

10" Power Take-Off Part Numbers 423676AM, 432555AM

RPM	<i>X" Distance</i>							
	0	1"	2"	3"	4"	5"	6"	7"
2000	2155	1407	1044	830	689	589	514	456
2400	2028	1324	983	781	649	554	484	429
2800	1927	1258	934	742	616	526	460	408
3200	1843	1203	893	710	589	504	440	390

10" Power Take-Off Part Numbers 428297AM

RPM	<i>X" Distance</i>							
	0	1"	2"	3"	4"	5"	6"	7"
2000	1303	1204	1119	1045	981	924	873	827
2200	1262	1166	1084	1013	950	895	846	802
2400	1226	1133	1053	984	923	869	821	779
2600	1194	1103	1025	958	899	846	800	758
2800	1165	1076	1000	935	877	826	780	740
3000	1138	1052	978	913	857	807	763	723

10" Power Take-Off Part Numbers 430358AM

RPM	<i>X" Distance</i>							
	0	1"	2"	3"	4"	5"	6"	7"
2000	3916	2557	1898	1509	1252	1070	934	829
2200	3794	2477	1838	1462	1213	1037	905	803
2400	3685	2406	1786	1420	1178	1007	879	780
2600	3588	2342	1739	1382	1147	981	856	760
2800	3501	2285	1696	1349	1119	957	835	741
3000	3421	2233	1658	1318	1094	935	816	724

10" Power Take-Off Part Numbers 431271AM

RPM	<i>X" Distance</i>						
	0	1"	2"	3"	4"	5"	6"
2000	4870	4510	3900	3100	2570	2190	1920
2200	4730	4380	3780	3000	2490	2130	1860
2400	4610	4270	3670	2910	2420	2070	1800
2600	4500	4170	3570	2840	2350	2010	1750
2800	4400	4080	3480	2770	2300	1960	1710

10" Power Take-Off Part Numbers 429451AM

RPM	<i>X" Distance</i>							
	0	1"	2"	3"	4"	5"	6"	7"
1600	2115	1376	1019	810	672	574	501	444
1900	1997	1299	963	765	634	542	473	419
2200	1902	1237	917	728	604	516	450	399
2500	1823	1186	879	698	579	494	432	383
2800	1755	1142	846	672	557	476	416	369

10" Power Take-Off Part Numbers 436003AM

RPM	<i>X" Distance</i>							
	0	1"	2"	3"	4"	5"	6"	7"
1600	4899	4347	3224	2562	2126	1816	1585	1407
1900	4626	4105	3044	2419	2007	1715	1497	1328
2200	4405	3909	2899	2304	1911	1633	1426	1265
2500	4221	3746	2778	2208	1832	1565	1366	1212
2800	4065	3607	2675	2126	1764	1507	1316	1167

10" Power Take-Off Part Numbers 436065AM

RPM	<i>X" Distance</i>							
	0	1"	2"	3"	4"	5"	6"	7"
1600	4858	4106	3042	2416	2004	1712	1494	1326
1900	4587	3877	2873	2282	1893	1617	1411	1252
2200	4369	3692	2736	2173	1802	1540	1344	1192
2500	4186	3538	2622	2082	1727	1475	1288	1142
2800	4031	3407	2525	2005	1663	1421	1240	1100

11.5" Power Take-Off Part Numbers 411122AM, 411183AM, 411046AM, 421681AM, 421636AM, 427225AM

RPM	<i>X" Distance</i>						
	0	1"	2"	3"	4"	5"	6"
2000	4869	4511	3896	3097	2571	2197	1918
2200	4732	4384	3774	3001	2490	2128	1858
2400	4610	4271	3666	2915	2419	2067	1805
2600	4501	4170	3569	2838	2355	2013	1758
2800	4402	4078	3482	2769	2298	1964	1715

11.5" Power Take-Off Part Numbers 436144AM

RPM	<i>X" Distance</i>							
	0	1"	2"	3"	4"	5"	6"	7"
1600	4899	4347	3224	2562	2126	1816	1585	1407
1900	4626	4105	3044	2419	2007	1715	1497	1328
2200	4405	3909	2899	2304	1911	1633	1426	1265
2500	4221	3746	2778	2208	1832	1565	1366	1212
2800	4065	3607	2675	2126	1764	1507	1316	1167

11.5" Power Take-Off Part Numbers 411127AM, 411088AM, 417778AM, 427489AM, 434845AM, 434846AM

RPM	<i>X" Distance</i>						
	0	1"	2"	3"	4"	5"	6"
2000	6820	5280	3940	3140	2610	2230	1950
2200	6630	5110	3810	3040	2530	2160	1890
2400	6460	4970	3710	2950	2460	2100	1840
2600	6300	4840	3610	2880	2390	2050	1790
2800	6170	4720	3520	2810	2330	2000	1740

11.5" Power Take-Off Part Numbers 415667AM, 424829AM

RPM	<i>X" Distance</i>							
	0	1"	2"	3"	4"	5"	6"	7"
2000	4877	4518	3916	3110	2579	2203	1923	1706
2200	4740	4391	3793	3013	2499	2134	1863	1653
2400	4617	4277	3685	2927	2427	2073	1810	1605
2600	4508	4176	3588	2850	2363	2019	1762	1563
2800	4409	4084	3500	2780	2306	1970	1719	1525

11.5" Power Take-Off Part Numbers

434510AM, 434511AM, 434514AM, 434515AM, 434516AM, 434517AM, 436471AM, 436482AM, 436483AM

RPM	<i>X" Distance</i>						
	0	1"	2"	3"	4"	5"	6"
2000	4860	4510	3890	3090	2570	2190	1910
2200	4730	4380	3770	3000	2490	2120	1850
2400	4610	4270	3660	2910	2410	2060	1800
2600	4500	4170	3560	2830	2350	2010	1750
2800	4400	4070	3480	2760	2290	1960	1710

11.5" Power Take-Off Part Numbers 437107AM

RPM	<i>X" Distance</i>							
	0	1"	2"	3"	4"	5"	6"	7"
1600	4089	2698	2013	1606	1335	1143	999	887
1900	3861	2548	1901	1516	1261	1079	943	838
2200	3677	2426	1810	1444	1201	1028	898	798
2500	3524	2325	1735	1384	1511	985	861	765
2800	3393	2239	1671	1332	1108	948	829	736

11.5" Power Take-Off Part Numbers 435771AM, 436565AM

RPM	<i>X" Distance</i>							
	0	1"	2"	3"	4"	5"	6"	7"
1600	4130	2691	1996	1586	1316	1124	981	871
1900	3900	2541	1885	1498	1243	1062	927	822
2200	3714	2420	1795	1426	1183	1011	883	783
2500	3559	2319	1720	1367	1134	969	846	750
2800	3428	2233	1656	1316	1092	933	814	723

2.5 Maximum Safe Operating Speeds

Maximum safe operating speeds of NACD Power Take-Offs with HE or HE(DP) clutches used for either in-line or side load drives are shown below:

6.5" HE	3700 RPM
7.5" HE	3400 RPM
8" HE	3250 RPM
10" HE	3000 RPM
11.5" HE	2800 RPM
11.5" HE (DP)	2800 RPM

2.6 Required Clutch Torque Capacity

To determine the actual torque capacity required of a clutch used for any given application the maximum engine torque and torque service factor must be considered. See the following chart and formula to calculate the proper clutch capacity required for the application.

Required Clutch Torque Capacity Calculation:

Torque Service Factors	
Blower or Vacuum	
-Centrifugal with free flow of air	1.7
-With high start-up inertia or subject to choking of air supply . . .	4.0
Compressors	
-Reciprocating, 1 or 2 cylinders	4.0
-Reciprocating 3 or more cylinders . .	2.5
-Roto screw or turbine	2.0
Conveyor	
-Fed uniformly	1.5
-Not fed uniformly.	2.0
-Reciprocating	3.0
Drills	2.0
Generator	2.0
Pump	
-Centrifugal or Turbine	1.5
-Dredge	2.0
-Mud or reciprocating	3.0
Rock Crusher, Hammer Mill.	3.0
Snow Blower.	2.0
Wood Chipper, Saw Mill	3.0

Required Clutch Torque= Maximum Engine Torque x Service Factor.

Ratings:

Shafts, bearings and clutch capacities are rated on a conservative basis. For usually heavy starting loads, frequent engagement service, or if prime mover is engine of less than 4 cylinders, consult NACD's Application Engineering Department for recommendations. Extremely low speed engines require special consideration.

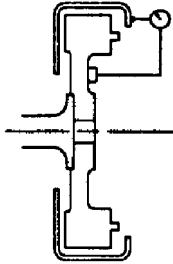
2.7 Alignment Tolerances for Flywheels and Flywheel Housings.

NOTE: NACD recommends that engine flywheel housings used with NACD PTOs be made of quality cast iron or other material of equal or better strength. Aluminum flywheel housings have been found to provide insufficient strength to properly maintain bearing alignment and support the weight and forces related to the application.

Check the alignment of the engine flywheel and the engine flywheel housing. Excessive bore and face runout of the flywheel, flywheel housing, and flywheel housing adapters, if used, can adversely affect the performance of the PTO and the system of which it is a part. A dial indicator will be required to measure alignment.

2.7.a Flywheel housing face runout deviation check

Mount the indicator base on the face of the flywheel and position the dial indicator tip perpendicular to the flywheel housing mounting flange face. Rotate the flywheel through 360 degrees.



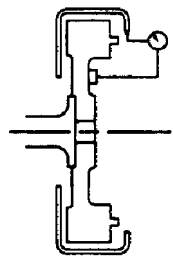
NOTE: The flywheel and crankshaft of the engine must be held against either the front or rear of the crankshaft thrust bearing while the total indicator sweep (TIR) measurement is being made.

The total indicator reading should not exceed:
SAE #1, #2, #3 Housing .008 (.203mm)
SAE #4, #5, #6 Housing .006 (.152mm)

NOTE: Identify SAE housings. See Basic Dimensions for SAE Housings section 2.1 for identification of SAE Housings.

2.7.b Flywheel housing bore runout deviation check

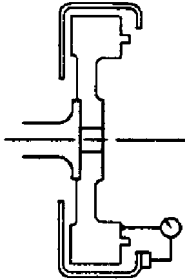
Mount the indicator base on the face of the flywheel and position the dial indicator tip so its movement is perpendicular to the pilot bore surface of the flywheel housing. Rotate the flywheel through 360 degrees.



The total indicator reading should not exceed:
SAE #1, #2, #3 Housing .008" (.203mm)
SAE #4, #5, #6 Housing .006" (.152mm)

2.7.c Flywheel face runout deviation check.

Mount the indicator base on the flywheel housing and position the dial indicator tip so its movement is perpendicular to the face of the flywheel. The indicator tip should be positioned near the drive ring mounting bolt circle diameter. Rotate the flywheel through 360 degrees.



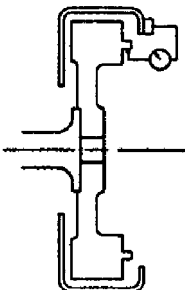
NOTE: The flywheel and crankshaft of the engine must be held against either the front or rear of the crankshaft thrust bearing while the total indicator sweep (TIS) measurement is being made.

Measure the diameter of the drive ring bore in the flywheel.

Clutch Size (ref)	Drive Ring Bore Dia.	Maximum T.I.R.
6.5" HE	8.5" (21.59cm)	.004" (.102mm)
7.5" HE	9.5" (24.13cm)	.005" (.127mm)
7.5" HE	11.125" (28.26cm)	.006" (.152mm)
8" HE	10.375" (26.35cm)	.005" (.127mm)
8" HE	11" (27.94cm)	.006" (.152mm)
10" HE	12.375" (31.43cm)	.006" (.152mm)
10" HE	13" (33.02cm)	.007" (.178mm)
11.5" HE	13.875" (35.24cm)	.007" (.178mm)
11.5" HE	15.5" (39.37cm)	.008" (.203mm)

2.7.d Flywheel drive ring pilot bore runout deviation check.

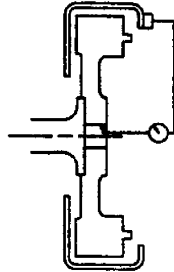
Mount the indicator base on the flywheel housing and position the dial indicator tip so its movement is perpendicular to the drive ring pilot bore surface of the flywheel. Rotate the flywheel through 360 degrees.



The total indicator reading should not exceed:
0.005 inches (0.127 mm)

2.7.e Flywheel pilot bearing bore runout deviation check.

Mount the indicator base on the flywheel housing and position the dial indicator tip so its movement is perpendicular to the pilot bearing bore surface of the flywheel. Rotate the flywheel through 360 degrees.



The total indicator reading should not exceed:
0.005 inches (0.127mm)

3.0 MAINTENANCE

3.1 Lubrication Requirements

3.1.a Grease Specification

USE ONLY NGLI (National Grease and Lubrication Institute) APPROVED High grade, lithium base #2, short fibre grease with an EP (extreme pressure) additive recommended for use in high speed roller bearings operating at 200 degrees F. (93.3 degrees C.)

3.1.b Grease specifications for special conditions

For ambient temperatures above 100 degrees F (37.8 degrees C), contact NACD for specifications.

GREASE CAUTION: Do not mix sodium or calcium based greases with lithium grease. Do not mix different types of greases under any circumstances in NACD Power Take-Offs. Do not use molybdenum disulfide grease.

3.2 Lubrication Intervals

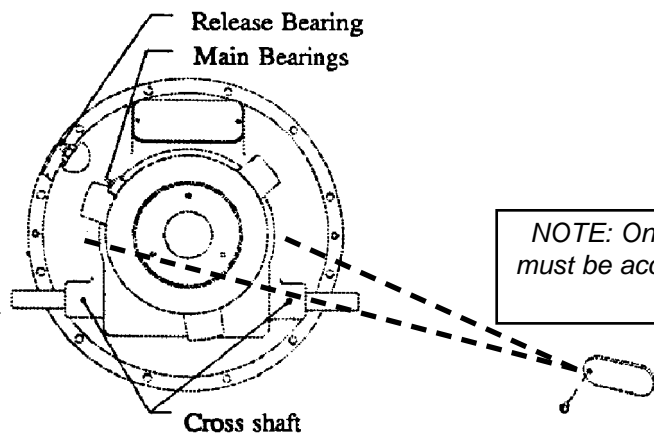
The following lubrication intervals are suggested as the guidelines. The owner/operator is responsible for establishing lubrication intervals appropriate to the duty cycle and environmental operating conditions to which the PTO is subjected.

3.2.a Release bearing-bronze & greasable ball type:

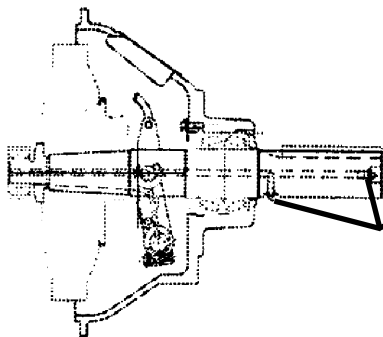
Using a hand operated grease gun, add 1 or 2 pumps of grease per 8-10 hours of operation (or add grease until grease begins to weep from the ID of the bearing and from between the release sleeve and the shaft). Rotate the shaft (by hand) while adding grease. **Do not over-grease!**

3.2.b Release sleeve used with non-greasable bearing:

Using a hand operated grease gun, add 1 or 2 pumps of grease per 8-10 hours of operation (or add grease until grease begins to weep from between the release sleeve and the shaft). Rotate the shaft (by hand) while adding grease. **Do not over-grease!!**



NOTE: On some models the grease fitting on the release bearing must be accessed by opening or removing a small cover located on the side of the housing.



*Pilot bearing
(Some PTO shafts have 2 possible grease locations; one location will be plugged and the other will have a grease fitting. If the PTO uses a non-greaseable cartridge type pilot bearing, both locations will be plugged or the shaft will have no drilled passageways at all.)*

3.2.c Main bearings:

Grease every 100 hours of operation. Add grease until grease is forced out of the labyrinth seal(s) around the shaft. Manually (not by starting the engine) rotate the shaft while adding grease.

3.2.d PTO cross shaft:

Grease every 500 hours of operation. Add one or two pumps of grease from a hand operated grease gun.

3.2.e Clutch linkage and levers:

Lubricate sparingly with engine oil every 500 hours of operation.

3.2.f Pilot bearing: (except non-greaseable type)

Using a hand operated grease gun, add 1 or 2 shots of grease per 100 hours of operation.

3.2.g Pilot bearing: (non-greaseable type)

Cartridge-type pilot bearings are sealed units and require no additional lubrication.

The lubrication intervals and the amount of grease used should be adjusted to minimize the amount of grease forced out of the housing and the clutch release bearing. A small amount of grease driven from the housing and clutch release bearing is an indication that enough grease is being provided.

3.3 Bearing Operating Temperature

3.3.a Main Bearing:

Operating temperature range is normally between 170 degrees F, and 200 degrees F (76.7 degrees C to 93.3 degrees C). Locations with high ambient temperatures such as desert climates will cause the bearings to operate at a higher temperature. More frequent lubrication intervals and/or specialized grease designed for higher operating temperatures will be required. See following note.

NOTE: There is a tendency to test temperature with the hand. However, it is difficult to hold a hand on a bearing housing operating at 150 degrees F (65.6 degrees C) although that temperature is below the normal 170 degree F (76.7 degrees C) operating temperature of the PTO. Therefore a thermometer (contact type) should be used to make reasonably accurate temperature measurements.

3.4 Methods of Measuring Clutch Engagement Force

The model 6.5" HE, 7.5" HE, 8" HE, 10" HE, 11.5" HE and 11.5" HE (DP) clutches described in this manual do not automatically adjust to compensate for wear of the clutch facing(s), and therefore must be manually adjusted. Maintaining the correct engagement pressure is the responsibility of the owner/operator. The owner/operator must periodically adjust the clutch to ensure correct clutch operation. See section 3.5.

The clutch should be adjusted if the force required to engage the clutch drops by 10-15% of the specified engagement force. Destructive damage may have already occurred if engagement force is allowed to diminish to the point where the clutch fails to carry the load (slippage), or if facing(s) have overheated.

CAUTION: Torque wrench readings are in FOOT-POUNDS, which are different values from spring scale readings which are in POUNDS OF FORCE. There is no direct correlation between FOOT-POUNDS and POUNDS OF FORCE. Do not confuse the two different kinds of values.

NOTE: New clutches or new facings usually require several, frequent adjustments until the friction facing surfaces have "worn in". The clutch friction facing plate(s) will become glazed, and possibly permanently damaged if the clutch is permitted to slip excessively.

NOTE: If the facings have been slipped excessively, and enough heat was generated that the facings began to smoke, the clutch material may have been destroyed. Excessive heat normally destroys the friction material. Therefore further clutch adjustment will not remedy slippage problems. Replace "burned" facing plates.

3.4.a Torque wrench method (preferred method).

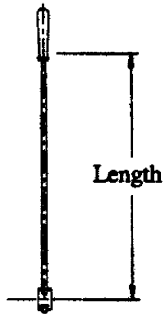
A torque wrench should be used at the cross shaft to measure engagement force. The following chart shows torque readings that represent proper clutch engagement force. The clutch should ENGAGE within the torque readings shown.

An adapter, NACD part number 236484AM, may be obtained to provide a 1.5" hex nut at the end of the cross shaft. The adapter may be used in place of the standard handle for the purpose of checking clutch adjustment with a torque wrench, or it may be installed on the end of the cross shaft opposite the standard handle. (Most PTOs have serrations on both ends of the cross shaft.) All NACD handles are cast with this hex.

Clutch Size & Type	Engagement Torque (measured at cross shaft)
6.5" HE	50-58 ft-lbs (68-79Nm)
7.5" HE	50-58 ft-lbs (68-79Nm)
8" HE	65-72 ft-lbs (88-98Nm)
10" HE	101-108 ft-lbs (137-146Nm)
11.5" HE (3.00" Yoke)	108-115 ft-lbs (146-156Nm)
11.5" HE(DP) (3.00" Yoke)	108-115 ft-lbs (146-156Nm)
11.5" HE(DP) (3.75" Yoke)	115-127 ft-lbs (156-172Nm)

NOTE: These values include 15% allowance for friction within the clutch release mechanism.

3.4.b Spring scale method using a standard handle.



Determine whether the engagement force is correct. Measure the distance from the bottom of the handle grip location to the center of the cross shaft. Attach a spring scale to the handle at the location specified below and pull the scale perpendicular to the handle to measure the force required to engage the clutch.

Handle Length Cross Shaft to Grip	Release Yoke Length	Engagement Force	
12" (30.48cm) 6.5" HE SAE #4, #5, #6	3.0" (7.62cm)	45 - 65 lbs (200-289N) 41 lbs. (182 N) 38 lbs. (169 N)	Original Setting 10% decrease 15% decrease
12" (30.48cm) 7.5" HE SAE #4, #5, #6	3.0" (7.62 cm)	45 - 65 lbs (200-289N) 41 lbs. (182 N) 38 lbs. (169 N)	Original Setting 10% decrease 15% decrease
12" (30.48cm) 8" HE SAE #4	3.0" (7.62 cm)	60 - 80 lbs (267-356N) 54 lbs. (240 N) 51 lbs. (227 N)	Original Setting 10% decrease 15% decrease
16" (40.64 cm) 8" HE SAE #3	3.0" (7.62 cm)	45 - 60 lbs (200-267N) 41 lbs. (182 N) 38 lbs. (169 N)	Original Setting 10% decrease 15% decrease
12" (30.48cm) 10" HE SAE #4	3.0" (7.62 cm)	95-120 lbs (423-534 N) 85 lbs (378 N) 81 lbs (360 N)	Original Setting 10% decrease 15% decrease
16" (40.64 cm) 8" HE SAE #2, #3	3.0" (7.62 cm)	70 - 90 lbs (311-400N) 63 lbs. (280 N) 59 lbs. (262 N)	Original Setting 10% decrease 15% decrease
21" (53.34 cm) 10" HE SAE #1	3.0" (7.62 cm)	55 - 70 lbs (245-311N) 50 lbs. (222 N) 47 lbs. (209 N)	Original Setting 10% decrease 15% decrease
16" (40.64 cm) 11.5" HE & HE(DP) SAE #4	3.0" (7.62 cm)	75 - 95 lbs (334-423N) 68 lbs. (302 N) 64 lbs. (284 N)	Original Setting 10% decrease 15% decrease
21" (53.34 cm) 11.5" HE & HE(DP) SAE #1	3.0" (7.62 cm)	60 - 75 lbs (267-334N) 54 lbs. (240 N) 51 lbs. (227 N)	Original Setting 10% decrease 15% decrease
16" (40.64 cm) 11.5" HE(DP) SAE #2, #3	3.75" (9.53 cm)	95-120 lbs (423-534 N) 85 lbs (378 N) 81 lbs (360 N)	Original Setting 10% decrease 15% decrease
21" (53.34 cm) 11.5" HE(DP) SAE #1	3.75" (9.53 cm)	75-90 lbs (334-400 N) 68 lbs (302 N) 64 lbs (284 N)	Original Setting 10% decrease 15% decrease

3.4.c Spring scale method with altered or special handle length.

Engagement force for standard handle lengths is shown in 3.4.b. For other handle lengths, use the following formula and refer to the following charts.

$$X = 1.15 \times \frac{A \times Y}{B}$$

X Engagement force at attachment point	lbs force	(newtons)
Y Engagement force at clutch release bearing	lbs force	(newtons)
A Length of clutch release yoke	inches	(centimeters)
B Length of handle (cross shaft to attachment point)	inches	(centimeters)

Clutch Size and Type	Value A	Value Y
6.5" HE	3.0" (7.62cm)	175 - 200# (778 - 887N)
7.5" HE	3.0" (7.62cm)	175 - 200# (778 - 887N)
8" HE	3.0" (7.62cm)	225 - 250# (1001 - 1112N)
10" HE	3.0" (7.62cm)	350 - 375# (1557 - 1668N)
11.5" HE	3.0" (7.62cm)	375 - 400# (1668 - 1779N)
11.5" HE(DP)	3.0" (7.62cm)	375 - 400# (1668 - 1779N)
11.5" HE(DP)	3.75" (9.53cm)	375 - 400# (1668 - 1779N)

3.5 Clutch Adjustment Procedure

If the clutch requires adjustment, remove the PTO nameplate, disengage the clutch and rotate it to gain access to the adjusting ring lock.

With a flat blade screwdriver or 7/16" wrench, loosen the adjustment lock bolt (417) and loosen or remove the adjustment lock (419). (See illustration in section 6.2.a)

Rotate the adjusting ring counter-clockwise to tighten the clutch. Rotating the adjustment ring clockwise will loosen the clutch. Adjust to obtain the proper handle engagement force by using one of the methods shown in section 3.4. (Torque wrench method in 3.4.a is the preferred method.)

When clutch is poorly adjusted, reposition the adjustment lock in the notches. Install and tighten the adjustment lock bolt.

Repeat the procedure in 3.4.a, 3.4.b, or 3.4.c, to recheck for proper engagement force.

NOTE: A new clutch installation usually requires several adjustments until the friction facing surfaces have "worn in". The clutch facing(s) will become glazed, and possibly permanently damaged, if the clutch is permitted to slip excessively.

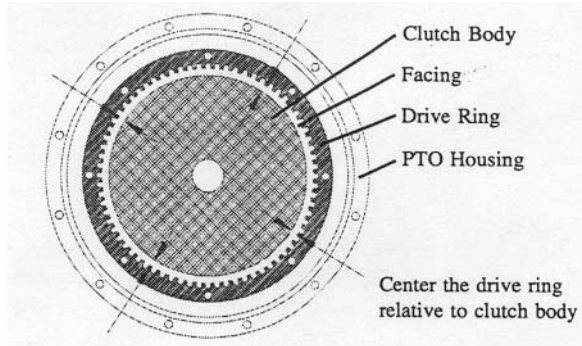
4.0 INSTALLATION INFORMATION

4.1 Preparation

Do not disengage the clutch before installing the PTO on the engine. Disengagement allows the clutch plates to slip out of the correctly aligned positions established at NACD.

4.1.a If the facing plates have become misaligned, they may be realigned by using the drive ring as a gauge. If the plates require alignment, follow the procedure outlined below.

4.1.b Support the PTO unit with the output shaft hanging straight down. Blocks or a hoist can be used to hold the PTO in position.



4.1.c Use the clutch drive ring provided with the PTO or remove the drive ring from the engine flywheel to use as an alignment gauge. Place the drive ring over the clutch facings with the clutch disengaged. Mesh the drive teeth of the facings with the drive ring and align the facings by centering the drive ring relative to the OD of the clutch body. While holding the drive ring and facings centered, engage the clutch.

4.1.d Remove the drive ring.

4.2 Flywheel and Flywheel Housing Alignment Checks

It is strongly recommended that the dial indicator checks be made (as shown in section 2.7) prior to installation of the PTO, especially on new engines or when bearing failures or shaft wear were found after the previous PTO was removed and examined for cause of failure.

4.3 Lubrication Required Before Installation

4.3.a See section 3.1 for information on the type(s) of lubricant(s) required.

4.3.b Lubricate as follows before installation.

(See illustration in section 3.2 for locations of grease fittings.)

Release bearing: (except non-greasable type)

Bronze and greasable ball-type release bearing:

With a hand operated grease gun, add 1 or 2 pumps of grease per 8-10 hours of operation (or until grease begins to weep from the I.D. of the bearing and the release sleeve. Rotate the shaft (by hand) while adding grease. **Do not over-grease!!**

Release bearing: (non-greasable type)

Non-greasable ball bearing type release bearing:

Sealed bearing- no lubrication required.

Release sleeve used with non-greasable bearing:

Using a hand operated grease gun, add 1 or 2 pumps of grease per 8-10 hours of operation (or add grease until grease begins to weep from between the release sleeve and the shaft). Rotate the shaft (by hand) while adding grease. **Do not over-grease!!**

Main bearing:

With a hand operated grease gun, add 1 or 2 pumps of grease while rotating the shaft (by hand), or until grease weeps from the labyrinth seals around the shaft at either end of the bearing housing.

Pilot bearing lube passage:

Some PTOs have a hole drilled through the length of the shaft to provide lube to the pilot bearing. The grease fitting may be located either at the end or to the side of the output shaft. Add grease until the center passage is filled with grease. Be sure that the shipping plug is removed from the pilot bearing end of the shaft prior to installation.

Cross shaft:

With a hand operated grease gun add 1 or 2 pumps of grease into each of the grease fittings located in the PTO housing, near each end of the cross shaft.

4.4 Install the PTO on the Engine

4.4.a Install the drive ring on the engine flywheel. Be sure that the ring is seated in the locating bore. Use USA SAE Grade 5 bolts (or equivalent) with lockwashers. Torque the bolts according to the chart below.

Clutch Size and Type	Bolt Size	Torque Specification
6.5" HE	5/16 - 18	15-18 ft-lbs (20 - 24 Nm)
7.5" HE	5/16 - 18	15-18 ft-lbs (20 - 24 Nm)
8" HE	3/8 - 16	26 - 35 ft-lbs (35 - 43 Nm)
10" HE	3/8 - 16	26 - 35 ft-lbs (35 - 43 Nm)
11.5" HE	3/8 - 16	26 - 35 ft-lbs (35 - 43 Nm)
11.5" HE(DP)	3/8 - 16	26 - 35 ft-lbs (35 - 43 Nm)

Use the engine manufacturer's torque specifications if different from the above.

Some engines use metric bolts. Refer to engine manufacturer's torque specifications.

4.4.b (For greasable pilot bearing ONLY). If a pilot bearing adapter is used on the flywheel, be sure the mating surfaces between the adapter and the flywheel face are sealed, to prevent loss of grease from the pilot bearing grease cavity due to vacuum or centrifugal force. Loctite 515 or equivalent is suggested.

4.4.c Proceed as follows:

For greasable pilot bearing ONLY: (bearing has a grease shield on 1 side only)

Pack the flywheel pilot bearing cavity with grease. Install the pilot bearing in the flywheel or adapter with the grease shield of a greasable bearing towards the PTO and clutch. Be sure that the pilot bearing spacer, if used, is in place. Two types of spacers may be used. Spacers may be installed in the flywheel to keep the pilot bearing from going too far into the bore in the flywheel, and a spacer may be used on the pilot end of the PTO shaft between the pilot bearing and the PTO to help maintain proper pilot bearing location in the flywheel bore.

For non-greasable pilot bearing ONLY: (bearing has 2 grease seals.)

Non-greasable, double-sealed pilot bearings require no re-lubrication and may be installed in the flywheel or adapter with either side toward the PTO and clutch. The shaft should have no grease fittings. If it does, remove the grease fitting(s) and replace with pipe plugs as a precaution to insure grease is not forced into the pilot bearing cavity of the flywheel. A build-up of pressure caused by forcing grease into the cavity can cause the pilot bearing to be forced out of the flywheel, resulting in a bearing or shaft failure.

4.4.d Install the PTO with the cross shaft in a horizontal position. Install two 5" long guide bolts in the flywheel housing holes, located approximately at the 3 o'clock and 9 o'clock positions. Position the PTO on the guide bolts to help align the unit and support the weight while the mounting bolts are installed.

Start the PTO shaft in the pilot bearing. Carefully align the clutch facing teeth with the teeth in the drive ring. Temporarily install longer bolts in 4 bolt holes 90 degrees apart, and tighten the bolts alternately and evenly to draw the PTO housing toward the flywheel housing. Replace the longer bolts with shorter ones as necessary, and tighten to draw the PTO into place. Then remove the temporary bolts and guide bolts, and replace them with proper mounting bolts. Install bolts and lockwashers. Use USA SAE Grade 5 bolts (or equivalent) with lockwashers. Torque bolts according to the following chart.

NOTE: Many engines use metric threads, so the below chart would not be applicable. Do not use bolts made with U.S. threads in holes with metric threads. The threads will be damaged, rendering them unusable.

SAE Housing Size	Bolt Size	Torque Specification
#1	7/16 - 14	42-50 ft-lbs (57 - 68 Nm)
#2	3/8 - 16	26-35 ft-lbs (32 - 43 Nm)
#3	3/8 - 16	26-35 ft-lbs (32 - 43 Nm)
#4	3/8 - 16	26-35 ft-lbs (32 - 43 Nm)
#5	3/8 - 16	26-35 ft-lbs (32 - 43 Nm)
#6	3/8 - 16	26-35 ft-lbs (32 - 43 Nm)

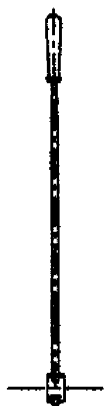
Use the engine manufacturer's torque specifications if different from the above torque recommendation.

4.4.e Rap the output end of the shaft with a soft mallet to relieve any pre-load on the engine crankshaft that may have built up as a result of the pilot bearing's fit on the shaft pilot.

4.5 Correct Handle Installation Position

Install the clutch handle or release mechanism. Position the handle so that it is pointing either straight up or straight down when the clutch is in the engaged position. Positioning the lever vertically minimizes loading on the release bearing.

If an altered or special clutch engagement mechanism is used (remote linkage mechanism is not recommended), be sure there is not pre-load on the release bearing either sideways or toward the engaged or released position. There should be no pre-load on the cross shaft in any direction, forward, rearward or sideways. A torsional and forward or rearward load (only) will be applied (only) during the engagement or disengagement cycle.



4.6 Check Clutch Engagement Pressure

The clutch was properly adjusted at the factory. However, due to variables created by first-time engagements, the clutch engagement pressure should be rechecked to insure proper clutch engagement pressure at the time of installation. See sections 3.4 and 3.5

NOTE: New clutches or new facings usually require several, frequent adjustments until the friction facing surfaces have "worn in". The clutch friction facing will become glazed, and possibly permanently damaged if the clutch is permitted to slip excessively.

4.6.a Adjust the clutch if necessary.

4.7 Attaching and Shimming an Outboard Shaft Support Bearing (OPTIONAL SUPPORT - SPECIAL APPLICATIONS ONLY)

NOTE: Perform the following procedure carefully and precisely. Misaligned bearings result in PTO failures.

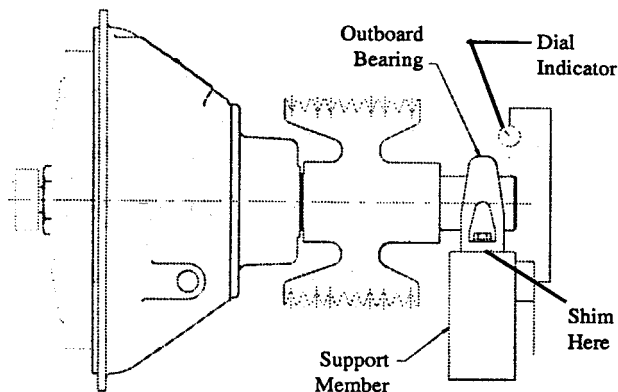
The following shimming procedures for shimming the outboard bearing must be carefully followed. It is imperative that the three (3) support bearings (pilot bearing, PTO main bearings(s) and outboard bearing) be in close alignment. The outboard bearing will help support the side loads imposed on the PTO shaft by the belts. If the three bearings are not installed so that the center of the PTO shaft is in a straight line, reduced bearing life will occur. It is therefore important that the internal PTO bearings be properly installed and adjusted, and that the outboard bearing NOT impose a load which would tend to bow the center line of the PTO shaft.

NOTE: NACD does not supply outboard bearings.

4.7.a The power take off must be bolted to the engine.

4.7.b Bolt and torque the outboard bearing support member to the frame.

4.7.c Install the outboard bearing on the PTO shaft in the position where it will later be tightened to the outboard bearing support member, but leave a small gap in the shim slot at this time.



4.7.d Secure (2) dial indicators to a solid base. Place the points of the indicators on top and side of the shaft, as close as possible to the outboard bearing. Set the dial indicators to "0".

4.7.e Properly torque the bolts securing the outboard bearing to the support member.

4.7.f Read the dial indicator. Add shims until the indicator reads 0 ± 0.001 inches (0.0254mm) after installing and properly torquing the mounting bolts.

4.7.g Tighten the belts using accurate tensioning methods and an accurate belt tensioning gage. The belts should not be tightened until all the mounting bolts have been tightened. Make sure that the side loads are lower than those listed in the allowable side load tables in section 2.4.

5.0 OPERATION

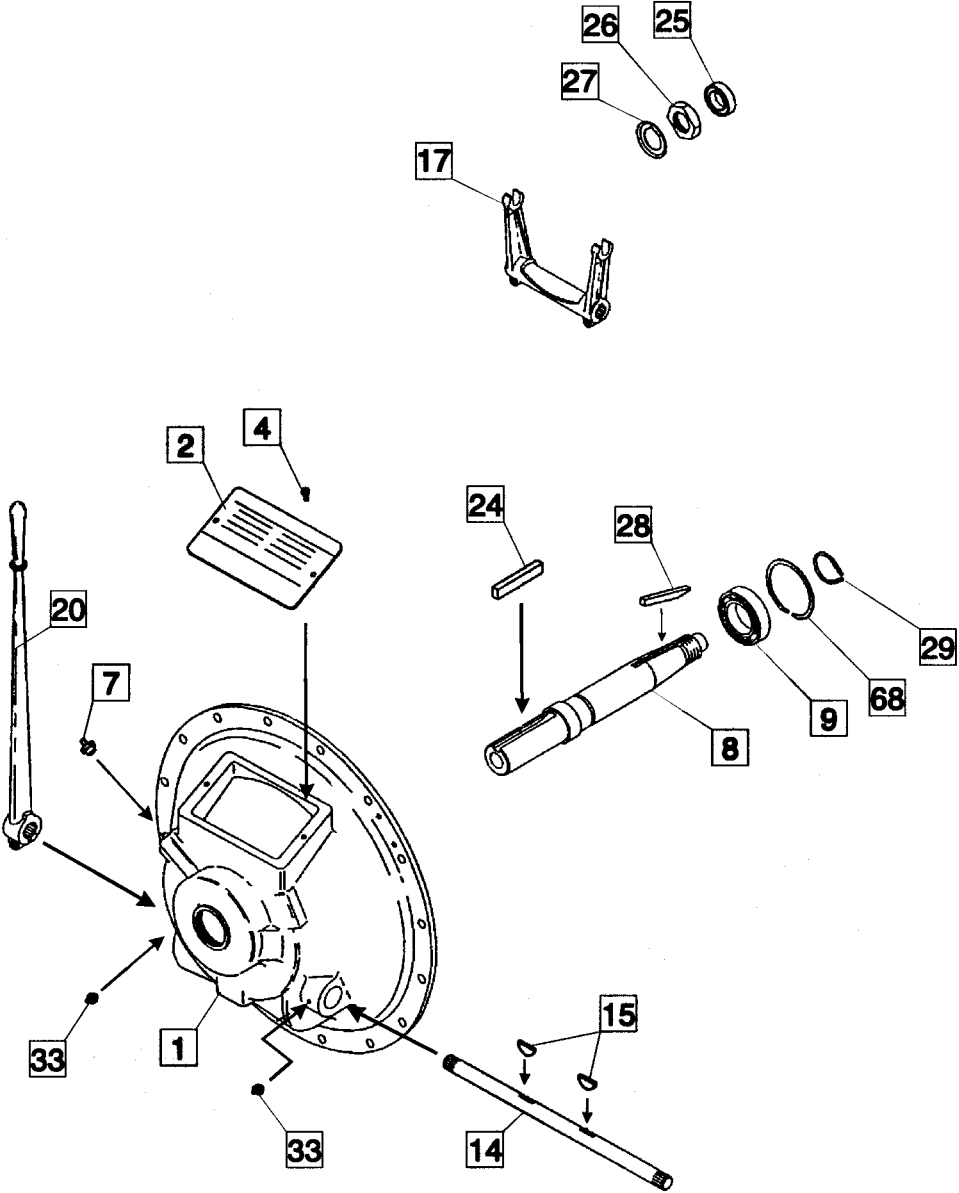
5.1 Clutch Engagement Procedure

5.1.a The PTO clutch should normally be engaged with the engine operating below 1,000 RPM. After the load has been brought up to engine speed, and the clutch is no longer slipping, the engine speed may be increased to operating speed.

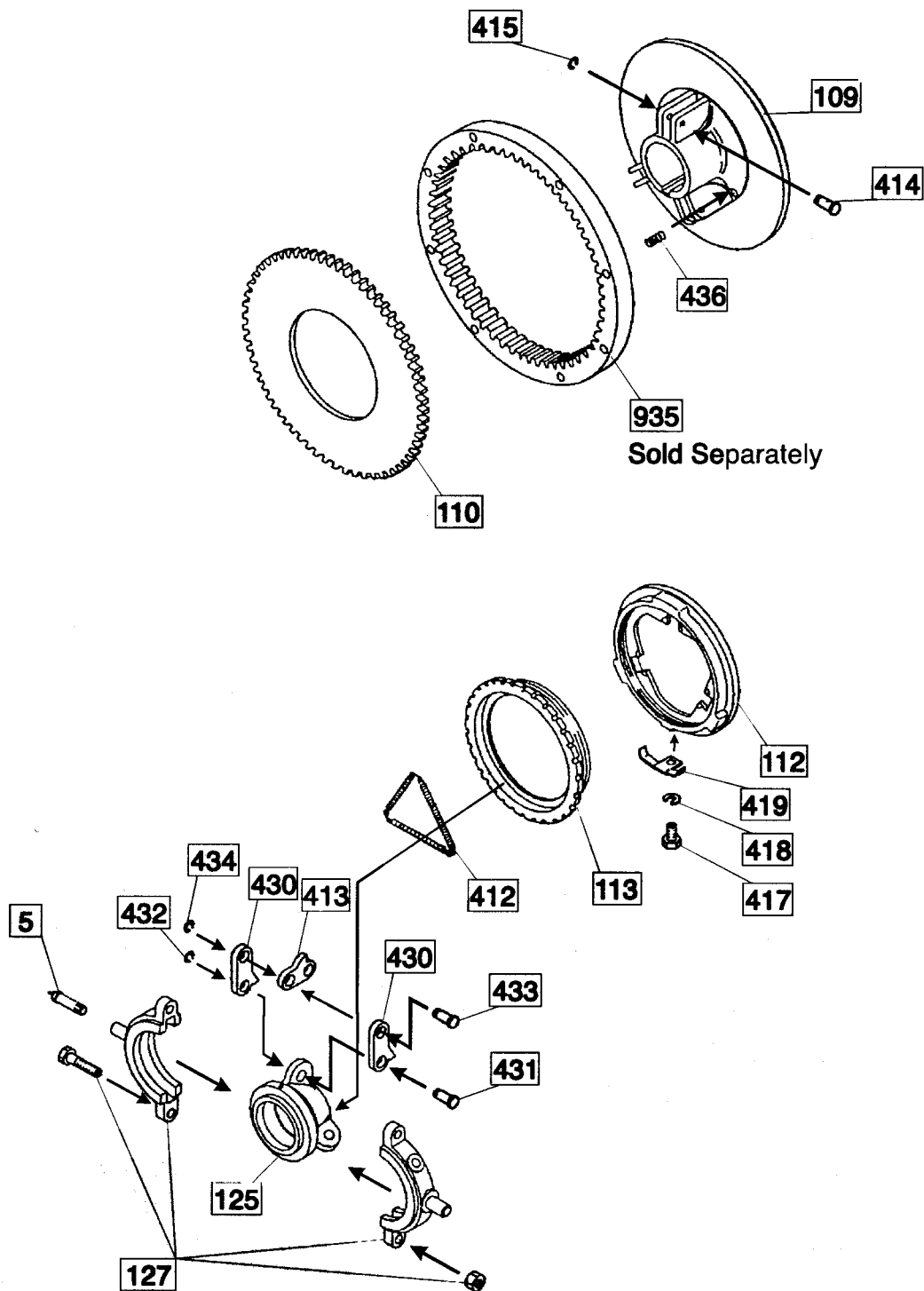
5.1.b Where high inertia loads must be picked up, engaging the clutch at 1,000 RPM may result in stalling the engine. Heavy inertia loads may be brought up to speed by a series of short engagements and disengagements at intervals long enough to prevent excessive heat build up in the facings. Under extreme circumstances, the engine may have to be operated at higher speeds while engagement occurs, but **UNDER NO CIRCUMSTANCES** should the clutch be slipped for more than a second or two without either fully engaging the clutch or completely disengaging the clutch to permit it to cool.

6.0 EXPLODED VIEWS - TYPICAL POWER TAKE-OFFS

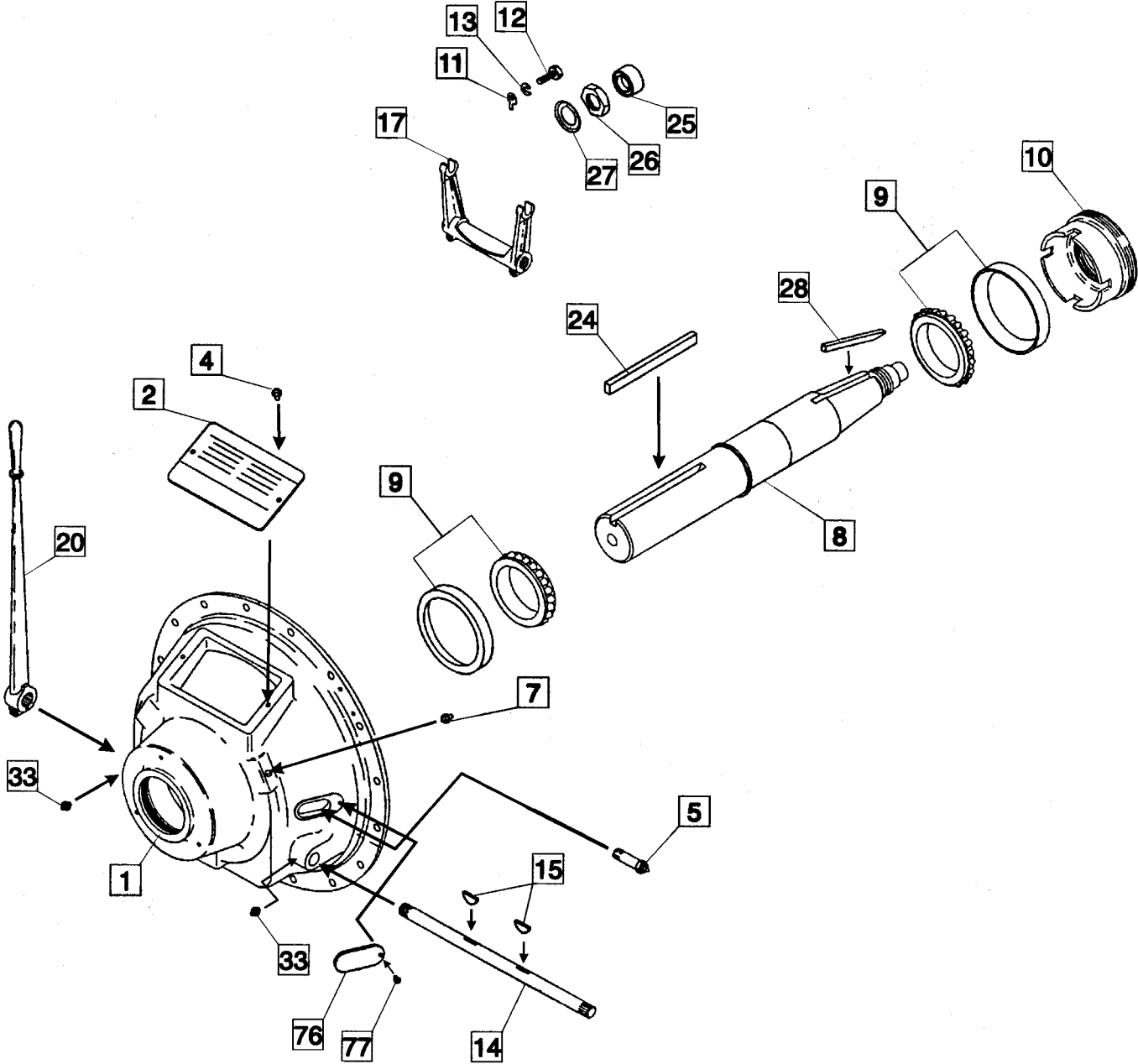
6.1 Typical configuration for SAE housing size 4, 5 or 6 with 6.5" or 7.5" clutch illustrated



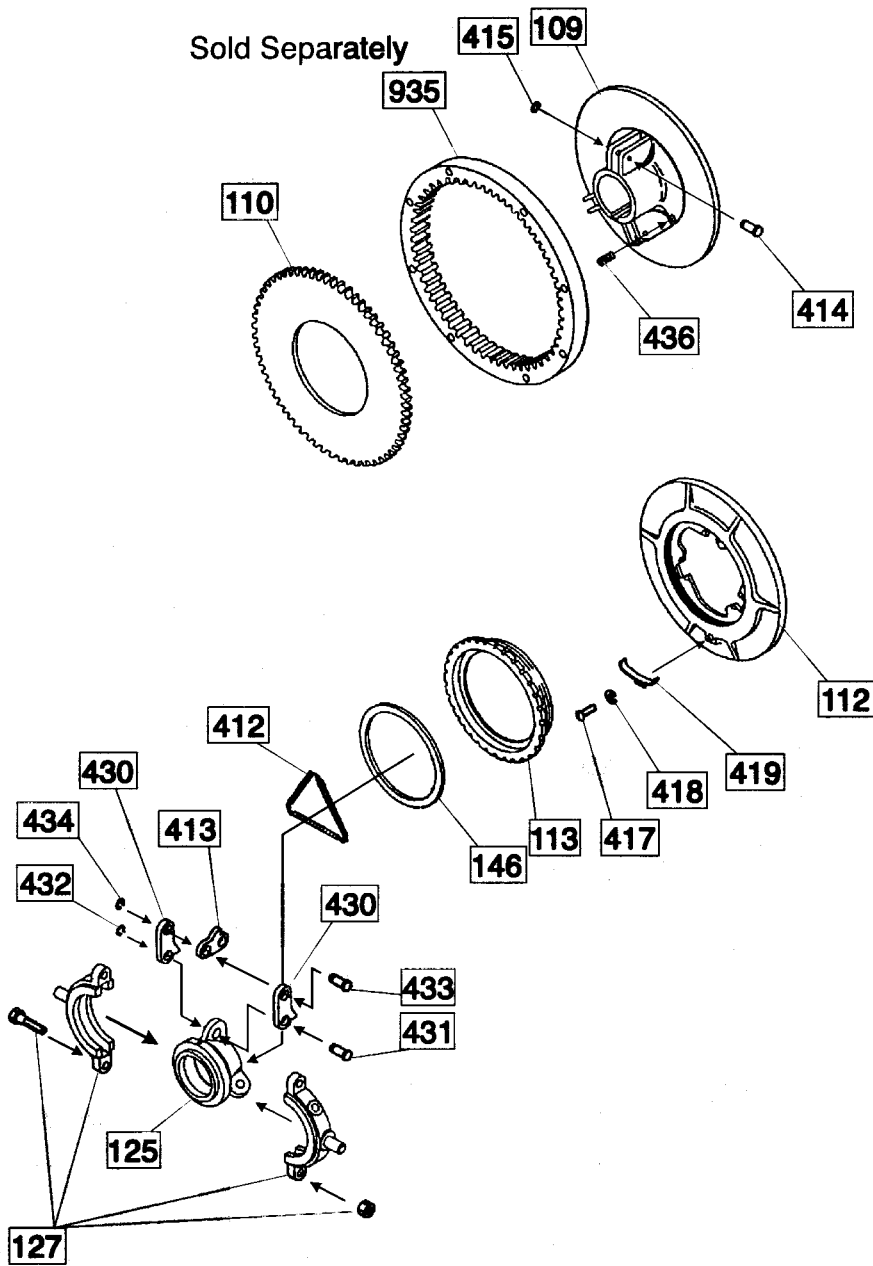
6.1.a Clutch assembly exploded view



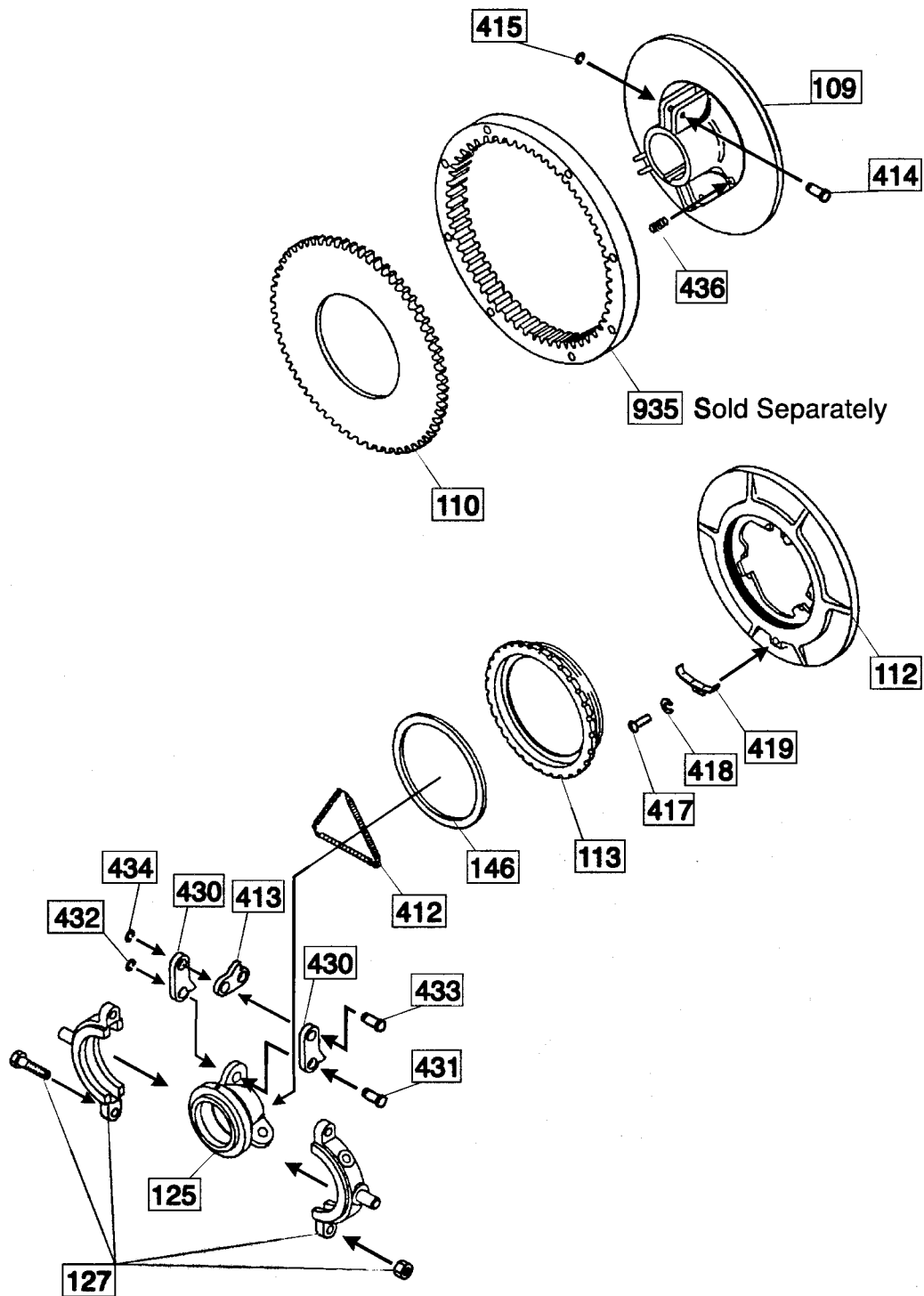
6.2 Typical configuration for SAE housing size 4 with 10" clutch illustrated



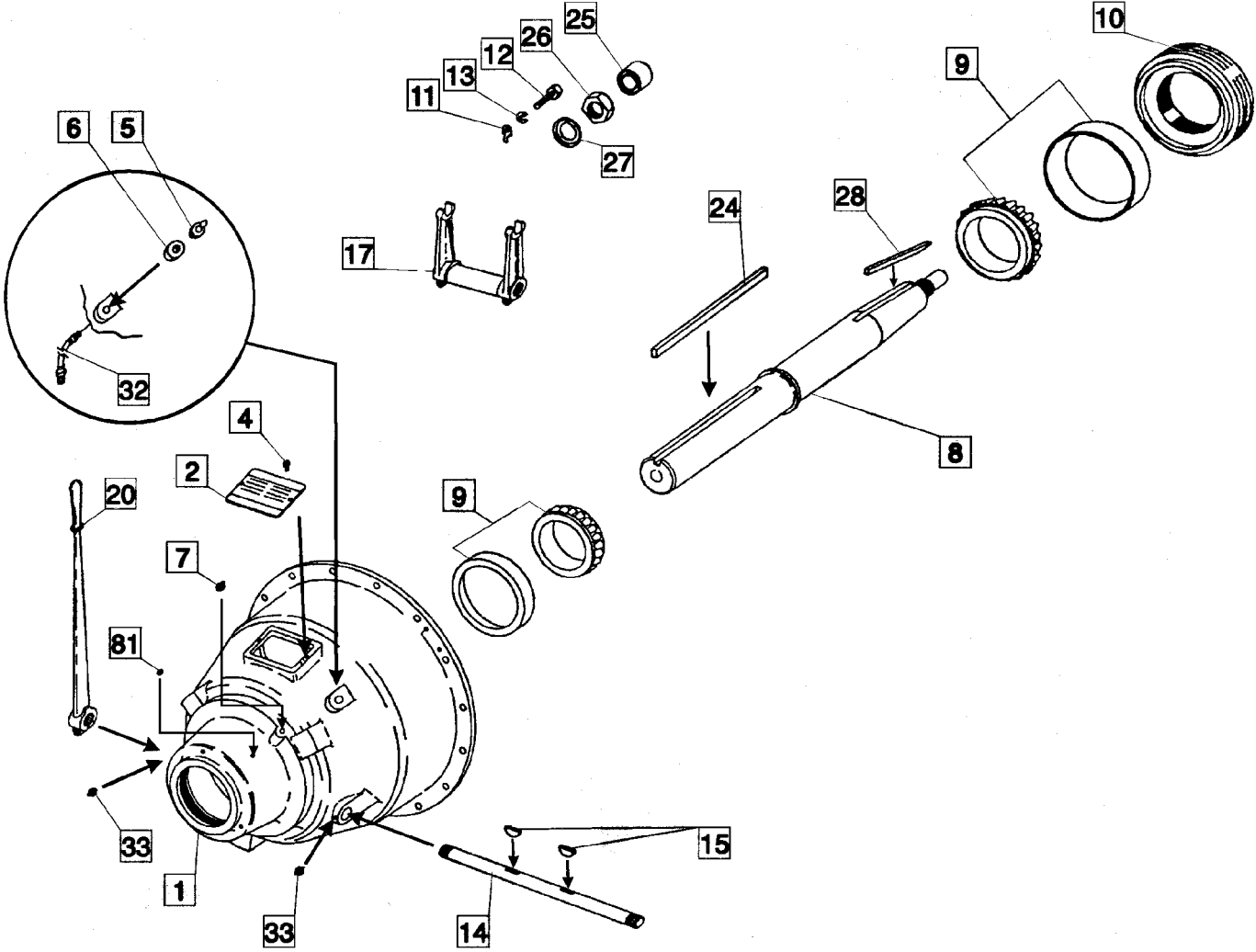
6.2.a Clutch assembly exploded view



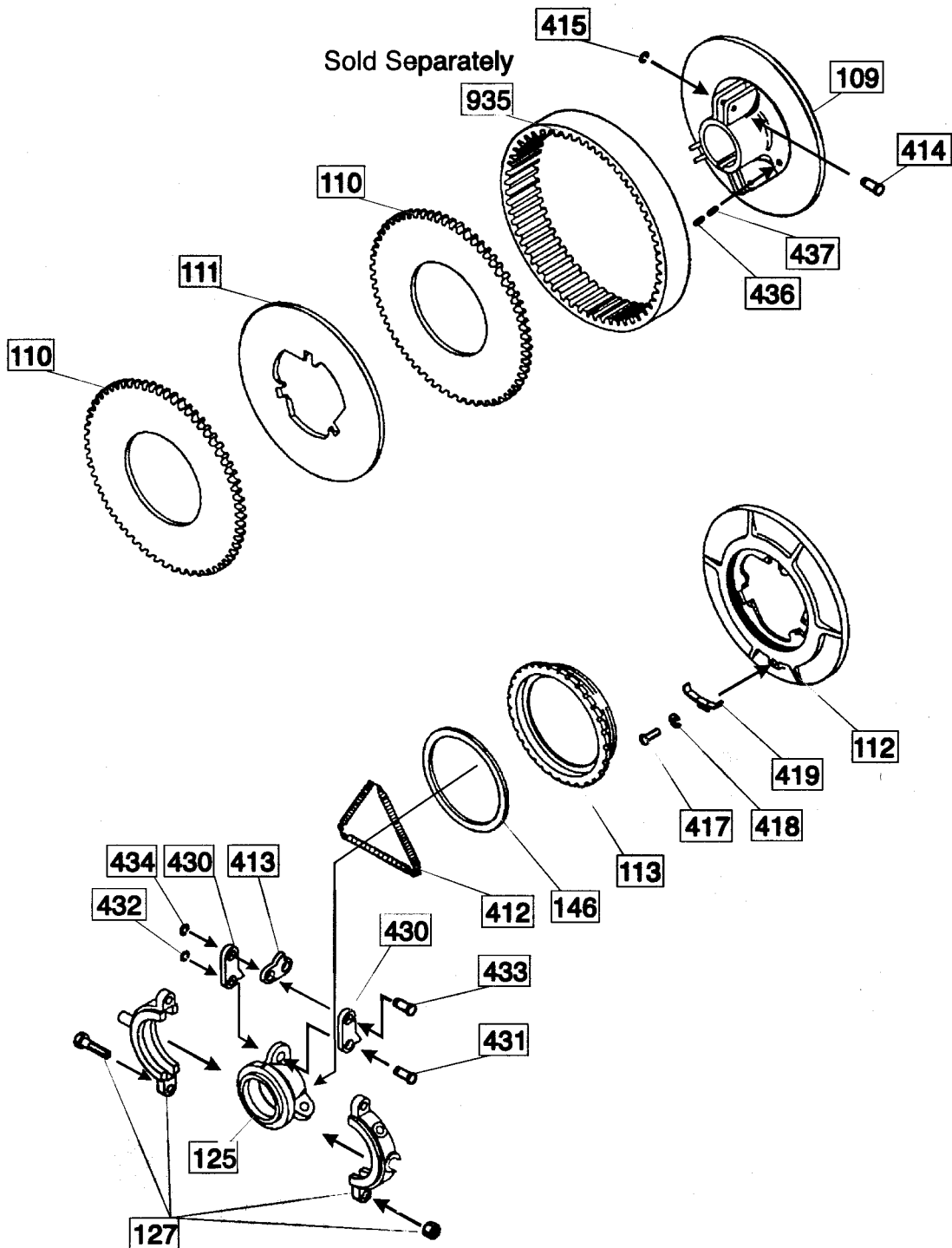
6.3.a Clutch assembly exploded view



6.4 Typical configuration for SAE housing size 1,2 or 3 with 11.5" DP clutch shown



6.4.a Clutch assembly exploded view



6.5 Universal Bill of Materials

1	Bell Housing	78	Headless Setscrew
2	Name Plate	79	Clutch Assembly
4	Bolt	81	Pipe Plug
5	Grease Zerk	109	Clutch Body
6	Jam Nut	110	Facing Plate
7	Grease Zerk	111	Center Plate
8	Drive Shaft	112	Pressure Plate
9	Main Bearings	113	Adjusting Ring
10	Bearing Retainer	125	Release Sleeve
11	Adjusting Lock	127	Release bearing kit
12	Lock Bolt	132	Sleeve & Bearing Assembly
13	Lock Washer	134	Name Plate
14	Cross Shaft	135	Drive Screw
15	Woodruff Key	136	Pressure Plate Assembly
17	Release Yoke	146	Wear Plate
18	Bolt	412	Lever Spring
19	Washer	413	Lever
20	Shifting Lever Sub-Assembly	414	Clevis Pin
21	Shifting Lever	415	Retainer Ring
22	Bolt	417	Lock Bolt
23	Washer	418	Lock Washer
24	Output Key	419	Adjustment Lock
25	Pilot Bearing	430	Link
26	Nut	431	Clevis Pin
27	Locking Washer	432	Retaining Ring
28	Clutch Key	433	Clevis Pin
29	External Snap Ring	434	Retainer Ring
32	Grease Tube	436	Seperator Spring
33	Grease Fitting (Cross Shaft)	437	Roll Pin
68	Internal Snap Ring	935	Drive Ring
69	Grease Fitting (End of Shaft)		

7.0 DISASSEMBLE THE POWER TAKE-OFF

(Refer to parts illustrations in section 6.0)

7.1 Remove All Accessories or Drives Attached To the Output Shaft

7.1.a Engage the clutch.

7.1.b Disconnect any linkage which may be attached to the clutch actuating handle.

7.1.c If the handle must be removed to permit removal of the Power Take-Off from the engine, loosen the bolt (22) which fastens the handle to the cross-shaft.

7.1.d Match-mark the handle and cross shaft so that the handle can be reinstalled at the same place on the shaft.

7.1.e Slide the handle off of the cross shaft spline.

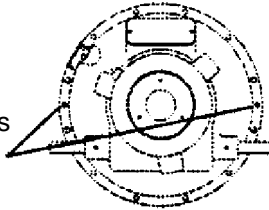
7.2 Remove the Power Take-Off From the Engine

7.2.a Attach a hoist or other suitable lifting device to the power take-off. Attach at 3 points spanning the center of gravity to hold the shaft in a horizontal position during removal.

7.2.b Remove the mounting bolts, removing those located near the top last. The PTO should separate from the flywheel housing. If the PTO doesn't separate, install two bolts in the threaded holes in the flange.

Holes are tapped for:

#1 Housing:	7/16" - 14 bolts
#2, #3, #4 Housing:	3/8" - 16 bolts
#5, #6 Housing:	3/8" - 16 bolts



Tighten the bolts evenly until the housing is removed from the engine flywheel housing pilot diameter.

7.2.c Exercise caution when removing the PTO from the engine to avoid damage to the grease fittings, facing(s), and pilot bearing.

7.3 Remove the Clutch From the PTO Shaft

7.3.a Remove the pilot bearing (25) from the shaft using a split-plate bearing puller.

7.3.b If not done in 7.1.b thru 7.1.e, loosen bolt (22) and remove the handle (21).

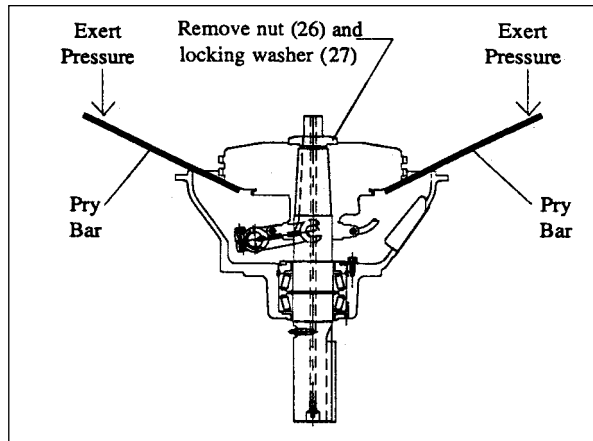
7.3.c Remove jam nut (6) securing the grease hose (if the release bearing is a regreasable type and a grease hose is used) and disconnect the hose fitting from the bell housing. The grease hose may now be removed from the release bearing (127) (or it may be removed after the clutch is removed from the shaft).

7.3.d Position the PTO with the pilot bearing end up, resting with support beneath the end of the output shaft (the impact force of the mallet blow in step 7.3.f will therefore be absorbed through the shaft rather than across the main bearing(s)).

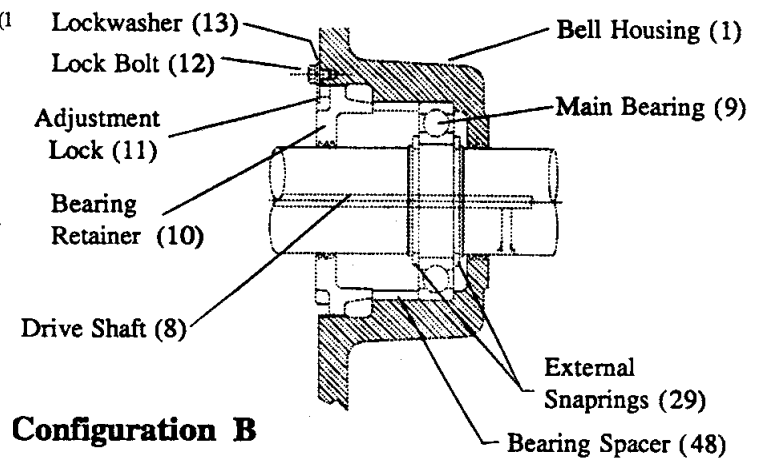
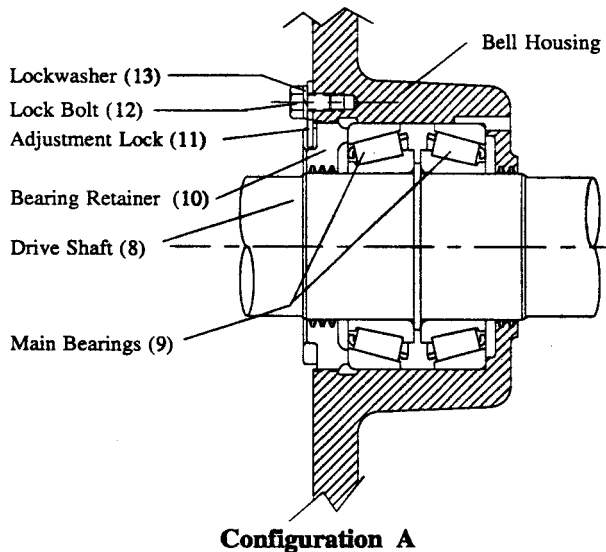
7.3.e Bend the locking washer (27) away from nut (26), and remove the nut and locking washer.

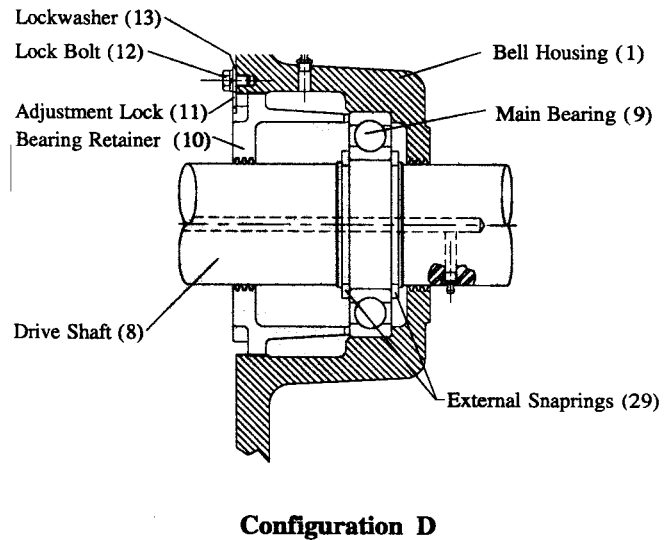
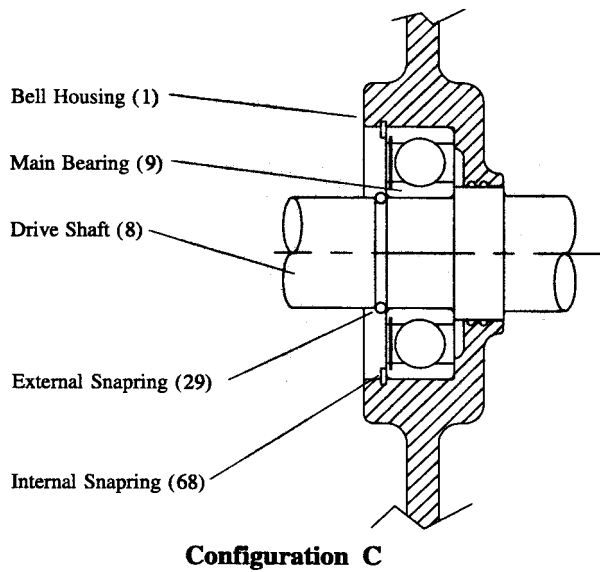
7.3.f Place pry bars under the pressure plate. While exerting pressure on the pry bars, strike the end of the shaft with a soft mallet to "jar" the clutch loose. Pull the clutch from the shaft.

CAUTION: Do not damage the pilot end of the shaft.



The following illustrate standard bearing and bearing housing configurations found in NACD Power Take-Offs. "Specials" have been designed and sold, but they are only slight variations of these standard configurations.





7.4 Remove the Shaft and Bearings From the Housing

Configuration C: Proceed to 7.4.e

CONFIGURATIONS A, B and D only:

7.4.a Remove lock bolt (12), lockwasher (13) and adjustment lock (11).

7.4.b Rotate the bearing retainer (10) counter-clockwise and remove it.

7.4.c Lift the drive shaft (8) with bearing(s) (9) from the bearing housing (a hoist may be needed).

7.4.d Configuration A only: One tapered roller bearing cup will have remained in the bearing housing. Remove the bearing cup from the bearing housing.

Insert a small punch through the three holes provided in the rear of the bearing housing and drive the cup out. (Some units have threaded plugs which first must be removed from the holes).

Proceed to 7.5

CONFIGURATION C only:

7.4.e Remove internal snapping (68).

7.4.f Lift the drive shaft (8) with bearing (9) from the bearing housing (a hoist may be needed).

7.5 Remove the Main Bearings From the Drive Shaft

Wash the bearings and bearing cups with clean fuel oil or solvent. Dry and carefully examine for wear, corrosion or rough spots. If it is determined the bearing(s) must be replaced, remove from the shaft.

Configuration B, C and D: Proceed to 7.5.d

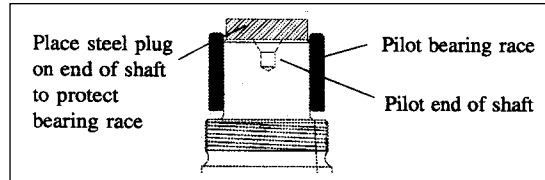
Configuration A only:

7.5.a Place the shaft in a press with a split-plate resting on the bed of the press, positioned under the top bearing inner race.

7.5.b Press the shaft from the bearing.

CAUTION: Place a block of wood beneath the shaft to prevent it from being damaged as it falls loose.

CAUTION: If the inner race of the pilot bearing is still on the shaft (roller bearing style) place a plug on the end of the shaft to prevent pressing against the pilot bearing inner race.



7.5.c Turn the shaft over and repeat steps 7.5.a and 7.5.b to remove the remaining bearing (9).

Proceed to 7.6

CONFIGURATION B, C and D only:

7.5.d Remove 1 or 2 external snapping(s) (29).

7.5.e Support beneath bearing (9) on the bed of a press.

7.5.f Press the drive shaft from the bearing.

CAUTION: Place a block of wood beneath the shaft to prevent it from being damaged as it falls loose.

7.6 Remove the Cross Shaft

7.6.a Loosen two bolts (18) securing the yoke assembly (17) to the cross shaft.

7.6.b Slide the cross shaft through the housing until the yoke rests against a block of wood placed between the yoke and the housing.

7.6.c With a soft mallet, drive the cross shaft out of the yoke just far enough to expose two woodruff keys (15).

7.6.d Remove the woodruff keys.

NOTE: The yoke may be loose enough to slide out without use of a mallet.

7.6.e Slide or tap the cross shaft out of the yoke and housing.

8.0 INSPECT THE POWER TAKE-OFF COMPONENTS

8.1 Ball bearings:

8.1.a Visually examine for indications of wear, corrosion, or pitting on balls and races. Apply clean, lightweight engine oil and slowly rotate the outer race while holding the inner race. The balls must roll free. Rough or sticking spots must be checked to be sure they are not particles of dirt. If they are, clean and check again. If not dirt, replace the bearing.

8.2 Tapered Roller Bearings:

8.2.a Visually examine for indications of wear, corrosion, brinelling or pitting on races or rollers. Rollers must not have flat spots or pitting. Bearing cups and cones must not exhibit signs of pitting, scuffing or tracking.

Lightly oil the races with clean oil, hold one race stationary while slowly rotating the other race against it. Rough spots or sticking indicate need for replacement. Races must be smooth and unworn.

8.3 Bell Housing:

8.3.a Check the bearing fit. Bearing races usually are designed with a sliding or slightly snug fit in the housing bore. They should not have side movement in the bore. Labyrinth seal bores at the output end of the bearing housing should be round, not worn oval and should be approximately .020:-0.25" (.508mm-.635mm) diameter larger than the drive shaft.

8.3.b Threads for the bearing retainer should not be damaged.

8.3.c If a bearing failure has occurred, be sure the bearing has not spun in the housing, destroying the shoulder or bore contacted by the bearing. Although the moveable bearing retainer will compensate for small amounts of shoulder wear, it is imperative the bearing contact the housing only at the OD of the race, and not anywhere else on the bearing in its assembled and adjusted position.

8.3.d The mounting pilot OD and mounting face must be free of protruding metal, rust, corrosion etc., which would prevent the housing from locating properly in the flywheel housing bore or against the flywheel housing face. An improper fit causes misalignment. Misalignment is a major cause of Power Take-Off failure. In Configuration C the snapping should restrict bearing movement to .015" (.381mm) maximum.

8.3.e Cross shaft holes should not be worn more than .015" (.381mm) out of round. A little wear does not render the parts unserviceable, but excessive wear can cause binding of the cross shaft under load during clutch engagement.

8.4 Bearing Retainer:

8.4.a Threads must not be damaged. A surface that presses against the bearing or bearing shims must be smooth, with no metal protrusions above the surface. A small indentation below the surface is not detrimental.

8.5 Cross Shaft:

8.5.a Be sure the cross shaft moves freely in the bell housing. Remove rust or corrosion from the cross shaft and the holes in the bell housing. Wear on the cross shaft does not become detrimental until it inhibits smooth rotation during clutch engagement (creates a false clutch engagement pressure reading) or allows moisture, dirt, or other corrosives to enter the housing. This can be prevented by ample greasing through the grease fittings to keep the cross shaft lubed.

8.5.b Woodruff key slots must hold the keys straight. If the release yoke has been loose on the cross shaft, the keyways may have one side worn at an angle.

8.6 Clutch Release Yoke:

8.6.a Keyways must not be worn excessively.

8.6.b Replace if width of cradles is over:

6.5", 7.5" and 8" (Bronze Brg.)	.645" (16.38mm)
8" (Ball Brg.), 10" and 11.5"	.765" (19.43mm)

8.7 Drive Shaft:

8.7.a Pilot bearing journal must not be worn. A new pilot bearing should have a sliding-but-snug fit or tight fit. Replace if the diameter of the pilot is less than shown below. Various basic sizes are shown.

Pilot Diameter New	Minimum Dimension (Worn)
.6694" - .6690"	.6690" (16.9926mm)
.7875" - .7871"	.7871" (19.9923mm)
.9844" - .9840"	.9840" (24.9936mm)
1.1812" - 1.1808"	1.1808" (29.9923mm)
1.1822" - 1.816"	1.1816" (30.0126mm)

8.7.b The shoulder between the tapered roller bearings (Configuration A) must not be damaged, and must have straight sides. If a bearing has failed and spun on the shaft, the shoulder may be worn thin, tapered and/or otherwise damaged. Three shoulder widths are used: .130"/.120", .193"/.183", and .255"/.245".

8.7.c Grease or oil passages should be thoroughly cleaned to be sure they are free of dirt and contaminants.

8.7.d Threads must not be damaged.

8.7.e Keyways must not be worn so as to allow side movement of keys.

8.7.f Clutch taper should not be worn, although a small amount of wear, if worn evenly 360 degrees around the shaft, may be serviceable as long as the clutch will seat securely and squarely and the jam nut will tighten against the clutch body. If too much wear has occurred, the clutch will slide too far onto the taper and the jam nut will bottom out on the thread or shoulder before it contacts the clutch body.

9.0 DISASSEMBLE THE CLUTCH

(Refer to parts illustration in section 6.0)

9.1 Preparation for Disassembly

9.1.a Disengage the clutch.

9.1.b Match-mark the clutch body (109), pressure plate (112), release sleeve (125) and center plate (111) on 11.5" HE (DP) clutches.

9.2 Remove the Release Sleeve and Bearing Assembly

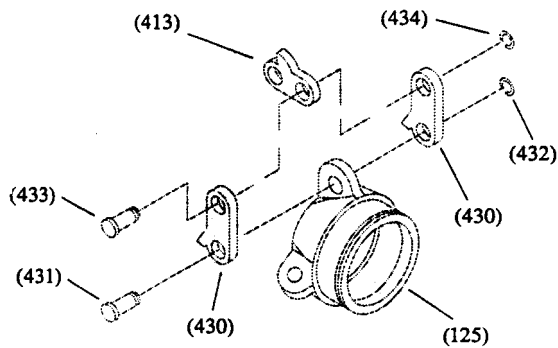
9.2.a Remove the lever spring (412).

9.2.b Notice the direction clevis pins (431 and 433) are installed. Upon reassembly of the clutch, they must be installed from the same side so the head leads the direction of clutch rotation. They should be as shown below.

9.2.c Remove retainers (434) and clevis pins (433) to separate the links (430) from the levers (413).

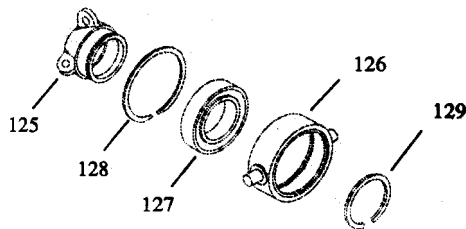
9.3 Disassemble the Sleeve and Bearing Assembly

9.3.a (*Ball type release bearing*): Remove the grease hose (32) (if the bearing is a regreasable style and a grease hose is used).



9.3.b Remove 3 retainers (432) and clevis pins (431) to remove the links (430) from the release sleeve (125).

9.3.c Remove the external snapping (129) from the release sleeve.



Typical ball-type release bearing configuration

9.3.d Using a split plate as close to the release sleeve as possible, support beneath the release bearing and bearing carrier (126) on the bed of a press. Press the release sleeve from the bearing.

9.3.e Remove the internal snapping (128).

9.3.f Tap the bearing carrier (126) off the release bearing.

Proceed to 9.4

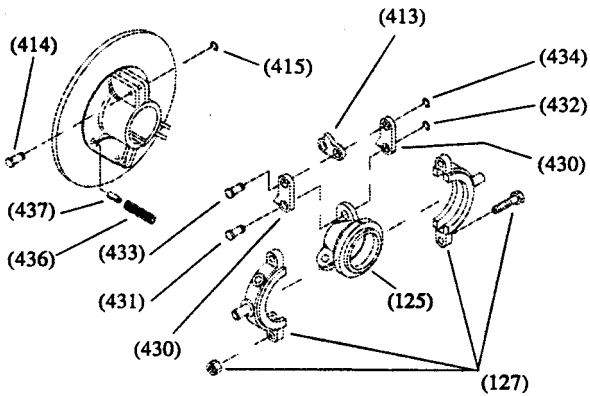
9.3.g (*Bronze-type release bearing*):

Match-mark the two halves of the bronze release bearing (127). Observe whether a machined side is up or down so it may be reinstalled in the same direction.

9.3.h Remove the grease hose (32) (if the bearing is a regreasable style and a grease hose is used).

9.3.i Remove 3 retainers (432) and clevis pins (431) to remove links (430) from the release sleeve (125).

9.3.j Loosen and remove 2 bolts and nuts holding the release bearing together. Remove the release bearing from the sleeve.



9.4 Remove the Levers

Note the direction the clevis pins (414) are installed so they can be reinstalled in the same direction. Remove (3) retainers (415) from the clevis pins (414). Press down on the pressure plate to compress the separator springs (436) and allow removal of the clevis pins. Remove the clevis pins (414) to separate the levers from the clutch body.

9.5 Remove and Disassemble the Pressure Plate Assembly

9.5.a Lift the pressure plate assembly from the clutch body.

9.5.b Remove the wear ring (146) from inside the adjusting ring.

9.5.c Remove the adjustment lock bolt (417), lockwasher (418) and adjustment lock (419) from the pressure plate.

9.5.d Rotate the adjusting ring counter-clockwise to remove it from the pressure plate.

9.6 Complete the Disassembly of the Clutch

9.6.a Remove the facing plate (110).

9.6.b Remove 3 separator springs (436) from the pockets in the clutch body.

(11.5" HE(DP)(2 plate) clutches only):

9.6.c Remove the center plate (111) and the remaining facing plate.

9.6.d If the spring pins (437) are worn or damaged, remove them from the clutch body.

10.0 INSPECT THE CLUTCH COMPONENTS

10.1 Clutch Body:

10.1.a Friction surface must not have heat cracks, must be smooth and must be flat within .005" (.127mm).

10.1.b Drive bosses must not have wear marks exceeding .003" (.076mm) depth due to wear from the pressure plate or center plate.

10.1.c Keyway must not be worn.

10.1.d Tapered bore must fit snugly and securely on shaft.

10.2 Pressure Plate:

10.2.a Friction surface must not have heat cracks, must be smooth and must be flat within .005" (.127mm).

10.2.b Drive slots must not be excessively worn. Measure the width of the clutch body drive lug in the worn contact area. Measure the width of the pressure plate drive slot in the (worn) contact area. If the difference between the two readings exceeds .012" (.305mm) the worn component(s) must be replaced.

10.2.c Threads for adjusting ring must not be damaged.

10.3 Release Sleeve:

10.3.a No fractures should exist in the bosses.

10.3.b Clevis pin holes must not be excessively worn. A small amount of wear is normal and will not be detrimental.

10.3.c The release sleeve bore should not be worn beyond the limits shown below.

Basic Size	Maximum Allowable Diameter
.875" (22.23mm)	.883" (22.482mm)
1.250" (31.75mm)	1.258" (31.953mm)
1.375" (34.93mm)	1.387" (35.230mm)
1.750" (44.45mm)	1.759" (44.679mm)
2.000" (50.80mm)	2.012" (51.105mm)
2.250" (57.15mm)	2.259" (57.379mm)
2.500" (63.50mm)	2.509" (63.729mm)

(for use with ball-type release bearing):

10.3.d Snapping groove must not be damaged or worn beyond:

Clutch Size	Maximum Allowable Width
6.5", 7.5"	.130" (3.30mm)
8"	.145" (3.68mm)
10", 11.5"	.155" (3.94mm)

10.3.e Ball bearing must fit tight on the release sleeve.

(for use with bronze-type release bearing):

10.3.f Shoulder width should not be worn below:

Basic Size	Minimum Width
5/16" (7.94mm)	.304" (7.72mm)
1/2" (12.70mm)	.493" (12.52mm)

10.4 Release Bearing:

10.4.a (ball type):

Clean and lightly oil the bearing. Hold the inner race and slowly rotate the outer race, feeling and listening for rough spots, catches or a sticking condition.

10.4.b (bronze type):

Flat areas are usually worn on the trunnions. Measure the trunnion diameter. Replace if worn to less than:

Clutch Size	Minimum Trunnion Diameter
6.5", 7.5", 8"	.605" (15.37mm)
8", 10", 11.5"	.730" (18.54mm)

10.4.c Internal slot that straddles the release sleeve shoulder maximum width:

Basic Size	Maximum Width
5/16" (7.94mm)	.319" (8.10mm)
1/2" (12.70mm)	.507" (12.88mm)

10.5 Bearing Carrier: *(ball-type release bearing only)*

10.5.a Flat areas are usually worn on the trunnions. Measure the trunnion diameter. Replace if worn to less than:

Clutch Size	Minimum Trunnion Diameter
6.5", 7.5"	.605" (15.37mm)
8", 10", 11.5"	.730" (18.54mm)

10.5.b The snapping groove must securely hold the snapping. Measure the dimension from the bearing shoulder inside the carrier to the farthest edge of the snapping groove.

Clutch Size	Maximum Width
6.5", 7.5", 8"	.700" (17.78mm)
10", 11.5"	.814" (20.68mm) or .891" (22.63mm)

10.5.c The bearing fit may be a sliding fit, but must be snug. A slightly tight fit is desirable.

10.6 Facing Plates:

10.6.a Must be free of oil or grease. Must not be burned. Once burned, they normally are incapable of holding torque.

10.6.b Measure the amount of wear which has occurred on each friction surface (2 surfaces per facing disc). Total wear allowable in any clutch (add 2 or 4 surfaces together) is approximately .25" (6.35cm). Thickness of a new facing plate is:

6.5", 7.5", 8" clutches	.375" (9.53mm)
10" and 11.5" clutches	.437" (11.10mm)

10.6.c Teeth must not be worn excessively or broken.

10.7 Center Plate:

10.7.a Friction surfaces must not have heat cracks, must be smooth, and must be flat within .005" (.127mm).

10.7.b Drive slots must not be excessively worn. Measure the width of the clutch body drive lug in the slot contact area and the width of the pressure plate drive slot in the (worn) contact area. If the difference between the two readings exceeds .007" (.180mm) the worn component(s) must be replaced.

10.7.c Minimum thickness of the facing contact area must not be less than .365" (9.27mm).

10.8 Grease Hose:

10.8.a Should be pliable, flexible and free of cracks, holes or wear.

10.8.b Braided wire design: Wire should not be crushed (flattened).

10.9 Levers:

10.9.a Clevis pin holes must not be excessively worn. A small amount of wear is normal and will not be detrimental.

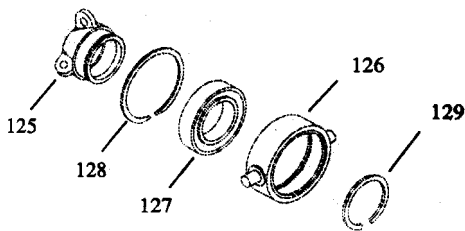
11.0 ASSEMBLE THE CLUTCH

(Refer to parts illustration in section 6.2)

11.1 Assemble the Sleeve and Bearing Assembly

(Ball-type release bearing):

11.1.A Install the release bearing (127) in the bearing carrier (126). The fit should be a snug sliding fit or a light press fit.



Typical ball-type release bearing configuration

11.1.b Install the internal snapping (128).

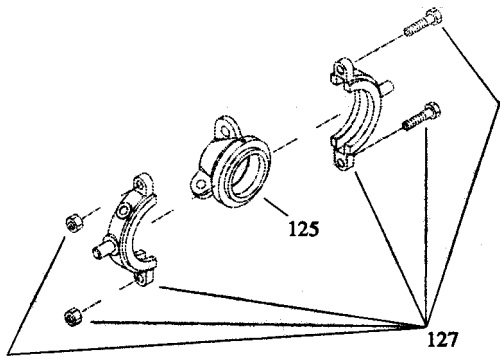
11.1.c Press the release bearing onto the release sleeve with the snapping (128) located on the side nearest the three bosses of the release sleeve. Be sure to press against the inner race of the bearing; do not support, press or tap against the outer race (bearing carrier). Damage to the bearing could result.

11.1.d Install external snapping (129).

Proceed to 11.1.g

(Bronze release bearing):

11.1.e Lubricate the inside slot of the bearing halves (127). Place the two halves of the release bearing in position on the release sleeve (125) (with the machined side up or down as was noted in 9.3.g).

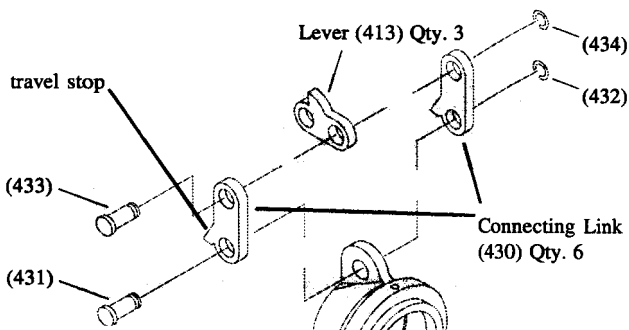


11.1.f Install and tighten the bolts and nuts holding the halves together. Rotate the bearing on the sleeve to be sure it turns freely.

11.1.g Place two connecting links (430) on one of the bosses of the release sleeve (one on either side of the boss). The travel stop protruding from one side of each link should point toward the bottom of the release sleeve and must rest against the release sleeve.

11.1.h Install the clevis pin (431) through both links and the boss on the sleeve.

NOTE: *The clevis pin must be installed as shown below so the head will lead the direction of clutch rotation.*

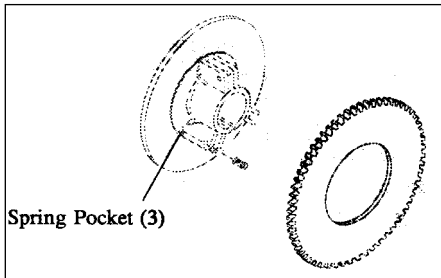


11.1.i Securely install the retainer (432) in the groove of the clevis pin.

11.1.j Repeat 11.1.g thru 11.1.i to install links on the remaining 2 bosses.

11.2 Assemble the Clutch Body Assembly

11.5" HE(DP) Clutches: Proceed at 11.2.d



11.2.a Place the clutch body (109) on the bench with the friction surface up.

11.2.b Install 3 separator springs (436) in the spring pockets of the clutch body.

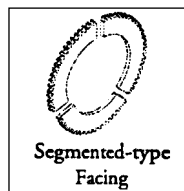
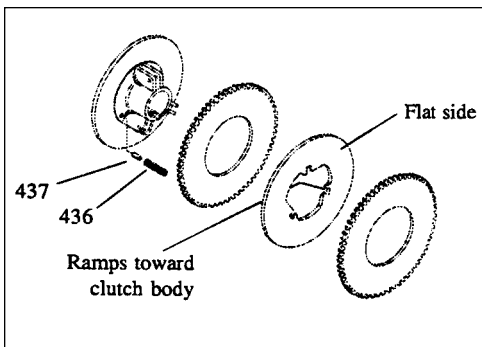
11.2.c Place one facing plate (110) on the clutch body.

Proceed to 11.2.h

(11.5" HE(DP) Clutches):

11.2.d (If they were removed) install the three spring pins (437) in the clutch body holes to support the separator springs. Drive them to the bottom of the holes.

11.2.e Install 3 separator springs (436) over the spring pins in the clutch body.



CAUTION: NACD DOES NOT APPROVE the use of segmented facings in 2-plate (DP) clutches.

11.2.f Place on (whole ring style) facing plate (110) on the clutch body.

11.2.g Place the center plate (111) on top of the facing with the machined "ramps" located along the sides of the drive slots facing down (away from the pressure plate). Then place a second (whole ring style) facing plate on top of the center plate.

11.2.h Thread the adjusting ring (113) into the pressure plate (112) almost to the bottom of the thread.

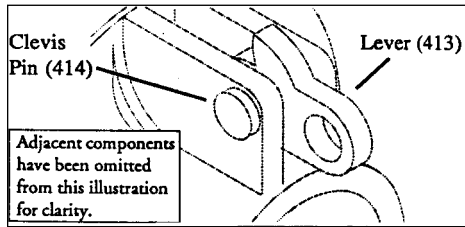
11.2.i Place the wear ring (146) in the adjusting ring.

11.2.j Place the pressure plate assembly on top of the facing plate, aligning the drive slots on the drive bosses of the clutch body.

11.3 Install the Release Levers

11.3.a Position the 3 levers (413) in the lever bosses with the protruding tang against the wear ring up and the

"long end" up. (See illustration in section 11.1.)



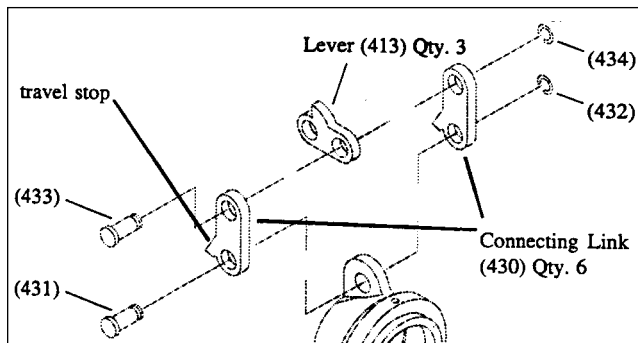
11.3.b Press down on the pressure plate to compress the separator springs and allow the clevis pins (414) to be inserted through the lever and clutch body.

NOTE: Be sure the clevis pins are installed so the heads will lead the direction of clutch rotation. (See section 11.1).

11.3.c Securely install retainers (415) on the clevis pins.

11.4 Install the Release Sleeve and Bearing Assembly on the Clutch

11.4.a Position the sleeve and bearing assembly on the clutch so the links align with the levers.



11.4.b Align the clevis pin holes and install a clevis pin (433) through the links and levers so the head of the clevis pin will lead the direction of rotation during clutch operation.

11.4.c Securely install the retainer (434) in the groove of the clevis pin.

11.4.d Repeat 11.4.b and 11.4.c at the remaining lever positions.

11.4.e Install the lever spring (412) over the release bearing. Locate one connector of the spring over each of 2 levers, then stretch the spring to get it onto the third lever.

11.4.f Using the drive ring as a gage, perfectly center the facing plate(s) relative to the clutch body.

11.4.g Engage the clutch by pressing the release sleeve and bearing down to the stop. If the facings are not clamped tight, disengage the clutch, rotate the adjusting ring counter-clockwise and reengage the clutch. Repeat until the clutch is adjusted tight enough to hold the facings aligned.

NOTE: If the facings are not perfectly aligned in the clutch, mounting the PTO onto the engine will be restricted by interference between the facing teeth and the teeth of the drive ring.

11.4.h Insert the adjustment lock in the slots of the adjusting ring. Install the lock bolt and lockwasher. Tighten finger tight.

NOTE: Do not disengage the clutch until after the PTO has been mounted on the engine. Should the facings become misaligned, see section 4.1 for realignment of the facings.

11.4.i Install the grease hose (32) (if used) in the proper hole in the release bearing. (In some designs a grease fitting (5) is installed directly into the bronze release bearing.)

NOTE: Many bronze release bearings provide more than one position for the grease hose as a standardization measure to reduce inventories. Install the grease hose in the position appropriate for your PTO. Be sure to securely install a pipe plug in the other hole to prevent loss of grease.

12.0 ASSEMBLE THE POWER TAKE-OFF

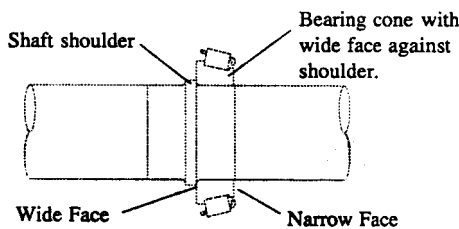
(Refer to parts illustrations in section 6.0)

12.1 Install the Main Bearings on the Drive Shaft

Configurations B & D: Proceed at 12.1.e
Configuration C: Proceed at 12.1.h

12.1.a (CONFIGURATION A only):

Start one bearing cone (9) on the shaft with the wide face of the inner race facing the shoulder on the drive shaft.



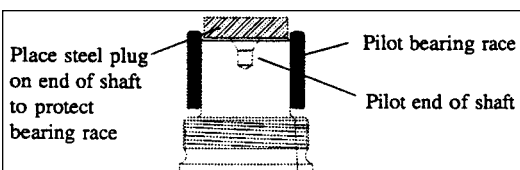
Configuration A

12.1.b Place a steel ring approximately .25" thick over the shaft resting against the narrow race of the bearing cone.

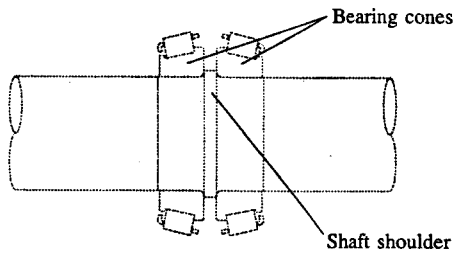
CAUTION: Do not allow any pressure to be applied against the bearing cage at any time. A damaged cage will cause bearing failure.

12.1.c Support beneath the steel ring on the bed of a press. Press the drive shaft into the bearing until the shoulder on the shaft is tight against the wide face of the bearing inner race.

NOTE: If the inner race of a roller type pilot bearing is on the shaft, place a plug on the end of the shaft to prevent pressing directly against the inner race.



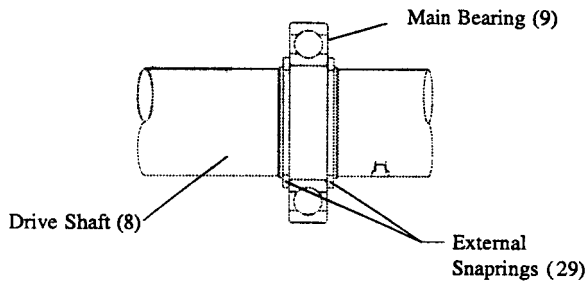
12.1.d Turn the shaft over in the press. Press the second bearing onto the drive shaft as in 12.1.a thru 12.1.c.



Proceed to 12.2.a

12.1.e (CONFIGURATIONS B and D ONLY):

Install one snapping (29) in a groove in the drive shaft (8).



Configurations B and D

12.1.f Support beneath the inner race of main bearing (9) with a split-plate on the bed of a press. Insert the drive shaft through the bearing (groove without the snapping passing through the bearing first.) Press the shaft into the bearing until the snapping firmly stops against the bearing.

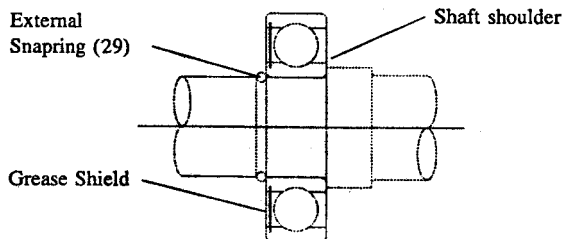
12.1.g Install the remaining snapping (29) in the open groove next to the bearing.

Proceed to 12.2.h

12.1.h (CONFIGURATION C only):

Support beneath the inner race of main bearing (9) with a split-plate on the bed of a press. Insert the drive shaft through the bearing, (snapping groove passing through the bearing first). Press the shaft into the bearing until the shaft shoulder firmly stops against the bearing.

NOTE: The grease shield of the bearing must be toward the pilot bearing / flywheel end of the shaft.



Configuration C

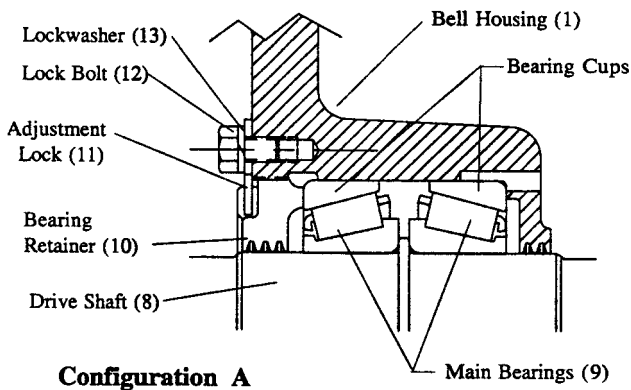
12.1.i Install the external snapping (29).

12.2 Install the Drive Shaft in the Housing

Configurations B & D: Proceed at 12.2.h
Configuration C: Proceed at 12.2.m

12.2.a (CONFIGURATION A ONLY):

Support beneath the bearing housing with the bore up.



Configuration A

12.2.b Install one bearing cup in the bore. (If

necessary, gently tap the cup to the bottom of the bore.)

12.2.c Install the shaft and bearing in the bore. DO NOT ADD GREASE AT THIS TIME, but the bearings should be lightly oiled.

12.2.d Place the second bearing cup onto the exposed bearing cone. (If necessary, gently tap on the outer edge of the cup to seat the cup against the bearing cone.) Under no circumstances should abusive force be used. Excessive force can damage the roller surface of the bearing cup, causing bearing failure.)

12.2.e Thread the bearing retainer (10) into the bearing housing until it is snugly tightened against the bearing cup. Rotate the drive shaft while tightening the bearing retainer to determine when "zero" bearing clearance exists. When the bearing cups are seated, the "zero" point will be noted by the increased effort required to rotate the drive shaft.

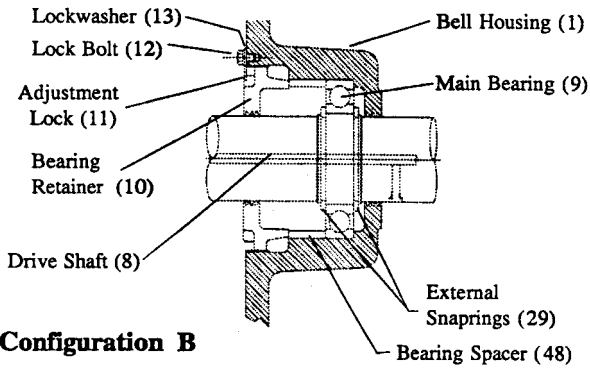
12.2.f After "zero" bearing clearance has been obtained, back the bearing retainer out 2 or 3 notches, using the adjustment lock bolt hole as a reference point.

NOTE: This is a preliminary adjustment. Final measurement and adjustment will be made in 13.2.

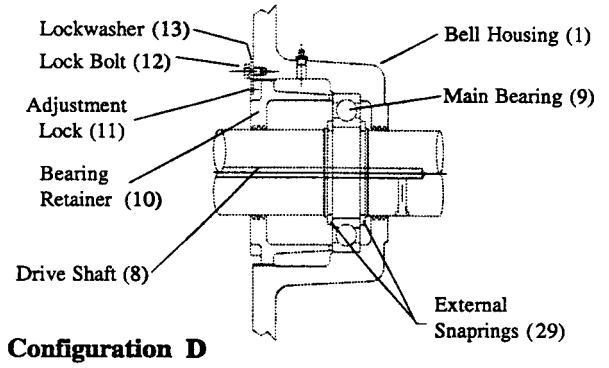
12.2.g Position the adjustment lock (11) tab in a notch, align the bolt hole with the hole in the housing, and install the adjustment lock bolt and lockwasher (12 and 13).

Proceed to 12.3

12.2.h (CONFIGURATIONS B and D ONLY):
Support beneath the bearing housing with the bore up.



Configuration B



Configuration D

12.2.i Install the shaft in the bore.

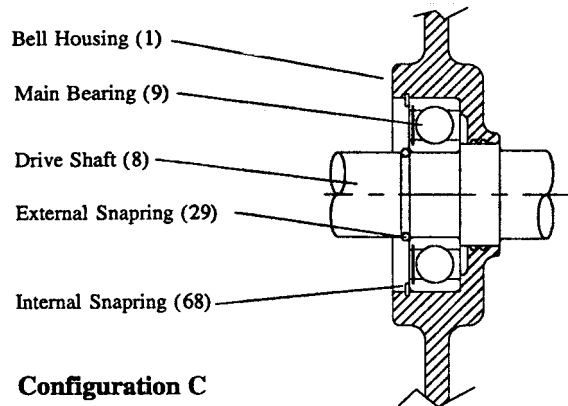
12.2.j (Configuration B only):
Install the bearing spacer (48) in the bore, against the bearing.

12.2.k Thread the bearing retainer (10) into the bearing housing until it is snugly tightened against the bearing spacer or bearing outer race.

12.2.l Back the bearing retainer off a partial notch if necessary to align the nearest notch with the adjustment lock (11) tab. Install the adjustment lock bolt and lockwasher (12 and 13).

Proceed to 12.3

12.2.m (CONFIGURATION C ONLY):
support beneath the housing with the bore up.



Configuration C

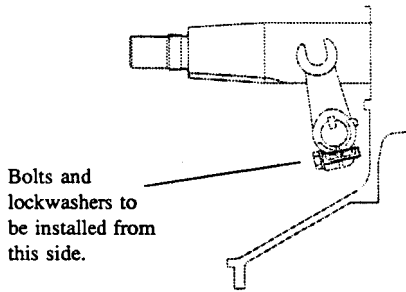
12.2.n Lower the drive shaft and main bearing (output end of the shaft first) to the bottom of the housing bore. The fit should be slightly snug. (Gently tap on the outer race of the bearing if necessary to seat it in the bottom of the bore).

CAUTION: Do not drive the bearing into the housing by tapping on the shaft. To do so may damage the roller surface of the bearing.

12.2.o Securely install the internal snapping (68) in the groove of the bearing housing.

12.3 Install the Cross Shaft and Clutch Release Yoke

12.3.a Lubricate the cross shaft holes in the bell housing. Slide the cross shaft (14) through one hole.



12.3.b Slide the clutch release yoke (17) onto the cross shaft. The bolt holes (unthreaded end) should face outward (toward the flywheel). Slide the cross shaft through the release yoke and into the other cross shaft hole in the bell housing.

12.3.c Rotate and position the cross shaft so one keyway is exposed in the middle of the release yoke. The other keyway will be located outside the yoke. Install two woodruff keys (15) in the cross shaft.

12.3.d Slide the cross shaft and woodruff keys into the keyways of the release yoke until the keys are centered on the yoke.

12.3.e Install two bolts and lock washers (18 and 19) in the clutch release yoke. Tighten and torque to:

Grade 2 bolts  17-20 ft-lbs (23 - 27Nm)

Grade 5 bolts  26-32 ft-lbs (35 - 43Nm)

12.4 Complete the Assembly of the Housing Unit

12.4.a Install all pipe plugs and fittings to complete assembly of the housing.

12.4.b Install remaining fittings in the shaft and housing. (see sections 3.2 and 6.0)

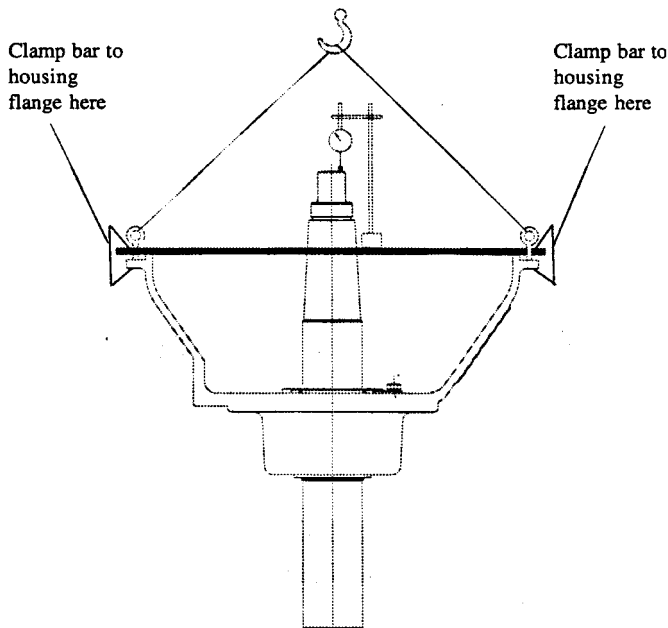
13.0 ADJUST THE MAIN BEARING END PLAY

13.1 (*CONFIGURATION B, C and D ONLY*):

These are ball bearing designs. No adjustment is required.

13.2 (*CONFIGURATION A only*):

13.2.a Support the PTO with a sling and chain hoist as illustrated.



13.2.b Raise the PTO high enough for access to the output end of the drive shaft. Using a soft, but heavy mallet against a hard wood block, strike the end of the shaft to seat the front bearing cup.

13.2.c Lower the PTO and repeat the procedure in 13.2.b on the front end of the drive shaft to seat the rear bearing cup.

CAUTION: Sufficient force must be used to securely seat the cups, but abusive force can damage the roller surface of the cups, resulting in bearing failure.

13.2.d Insert 4 pieces of shim stock between the shaft and the bearing retainer to fill the gap and minimize sideways movement of the shaft.

13.2.e Attach a dial indicator to a solid bar clamped across the housing as shown. Position the tip of the dial indicator on the nose of the shaft with the direction of indicator tip travel parallel to the shaft. Set the dial indicator to "0".

13.2.f Lower the PTO so the shaft rests on a wood block. Allow a small amount of slack in the lifting strap. Tap lightly on the bell housing to move it downward. Read the dial indicator. The amount of bearing end play will be indicated.

13.2.g Raise the PTO off the wood block. Lightly tap on the pilot bearing end of the drive shaft to move it downward against the rear bearing cup.

13.2.h Again read the dial indicator. It should have returned to "0". If it didn't, repeat 13.2.e thru 13.2.g to obtain an accurate reading.

*Main bearing end play should be:
(Grease lubricated bearings:)
Configuration A: .004" - .008" (loose)
(check with bearings lightly oiled, not greased)*

13.2.i If adjustment is necessary, proceed as follows: Rotate the bearing retainer clockwise to decrease or

counter-clockwise to increase the setting, then repeat 13.2.f thru 13.2.h to verify the proper setting has been attained.

13.2.j Install the adjustment lock.

14.0 INSTALL THE CLUTCH ON THE DRIVESHAFT

14.1 Support the PTO under a hoist, with the output end of the drive shaft resting on a hard wood block.

14.2 Rotate the release bearing so the grease hose is located on the side closest to the hole in the housing.

14.3 Carefully lower the clutch onto the drive shaft. As the release bearing approaches the clutch release yoke, rotate the yoke upwards to engage the bearing carrier trunnions in the cradles of the release yoke.

14.4 Just before the clutch becomes seated on the taper of the drive shaft, rotate the clutch to align the shaft and clutch body keyways and install the key (28) halfway into the keyway.

NOTE: If the key is installed to the bottom of the keyway before the clutch is completely seated, it may restrict proper seating of the clutch.

14.5 Securely seat the clutch on the drive shaft.

14.6 Drive the key further into the keyway, just deep enough to be clear of the tab on the locking washer.

14.7 Place the locking washer (27) on top of the clutch. Locate the tab in the keyway.

14.8 Install and tighten nut (26) against the locking washer. Torque to:

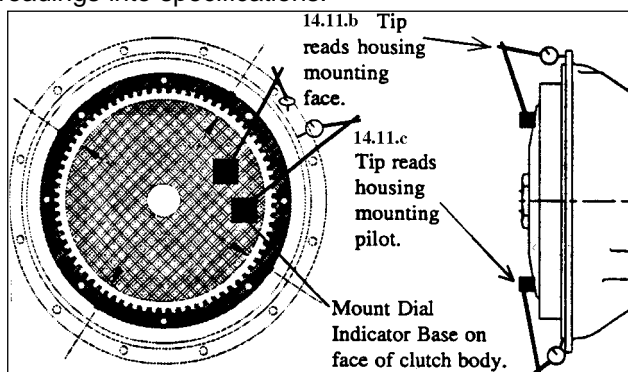
6.5 HE, 7.5" HE and 8" HE	165 - 170 ft-lbs (224 - 231Nm)
10" HE and 11.5" HE (single plate)	175 - 180 ft-lbs (237 - 244Nm)
11.5" HE(DP) (double plate)	225 - 230 ft-lbs (305 - 312Nm)

14.9 Using a soft but heavy mallet, strike the clutch body to drive it down onto the drive shaft. Check the torque on the nut to be sure it has not loosened.

CAUTION: Be sure the drive shaft is resting on the wood block before striking the clutch body so the force of the impact can be absorbed by the wood block rather than by the bearing races.

14.10 Bend an edge of the locking washer (27) up flat against one flat of the nut (26).

14.11 Check to be sure the clutch and housing are installed properly and in alignment. If the readings exceed the maximum T.I.R. (total indicator reading), repeat installation of the clutch and/or housings to bring the readings into specifications.



14.11.a Securely support the PTO beneath the rear of the housing with the bell housing and clutch end up. The output shaft end must hang free and be suspended on the bearing races.

14.11.b Mount the base of a dial indicator on the face of the clutch body. Locate the tip on the bell housing mounting face. Slowly rotate the clutch and shaft to read face runout. Maximum runout must not exceed:

SAE #1, #2, #3 Housing	.008" (.203mm)
SAE #4, #5, #6 Housing	.006" (.152mm)

14.11.c Move the tip to read the OD of the housing pilot and repeat as in 14.11.b. Maximum runout must not exceed:

SAE #1, #2, #3 Housing	.008" (.203mm)
SAE #4, #5, #6 Housing	.006" (.152mm)

14.12 Install the grease hose (greasable release bearing only) through the hole in the side of the housing (if a grease hose is used). Install and tighten the lock nut (6).

14.13 Install the grease fitting (5) in the end of the grease hose (if used).

14.14 Lubricate the PTO. (See sections 3.1, 3.2, and 4.3.)

14.15 Final clutch adjustment may be made after the Power Take-Off is installed on the engine. Refer to sections 3.4 and 3.5 for final clutch adjustment information.

14.16 Refer to section 4.0 for Power Take-Off installation and lubrication instructions.

15.0 TROUBLESHOOTING GUIDE

15.1 Common Causes for PTO Failures:

Problem	Cause	Correction
Clutch slippage	No adjustment or improper adjustment	Clutch pressure must be set with spring pull scale or torque wrench (See section 3.4 and 3.5.)
Clutch slippage (adjustment was properly set)	Glazed, burned or warped mating components from high engagements.	Replace complete clutch with new assembly. Engage with engine speed less than 1000 RPM. (See section 5.0.)
Clutch slippage (adjustment was properly set)	Clutch disc is oil or grease soaked.	Check for proper grease viscosity & lube intervals. Replace damaged components. (See section 3.0)
Clutch failure (several times)	Clutch does not have torque capacity for engine output.	Review application. Contact NACD.
Failed release bearing (bronze type)	Improper handle position and/or modification.	Position handle vertically up or down when engaged and no pre-load. (See section 4.5)
No output from PTO (clutch feels normal)	Drive teeth worn off clutch disc.	Check for failed pilot bearing, misalignment, and dial indicate bell housing. (See section 2.7)
Failed pilot bearing	Bearing overloaded, lack of lube, improper bearing for application.	Check for proper belt tension, lubrication and application. (See section 2.4 and 3.0)
Failed main bearing(s) (repeated failures)	Improper application (In-line vs. side load)	Review application. Contact NACD.
Failed main bearing(s)	Improper lube intervals, improper grease, incorrect bearing setting if applicable.	Checking for proper lubrication, review lube intervals, set bearings to proper clearance. (See section 3.0 and 13.0)



LIMITED NACD GENERAL WARRANTY, LIMITATIONS OF REMEDIES AND
LIMITATIONS OF OTHER WARRANTIES

- A. North American Clutch and Driveline warrants all assembled products and parts to the original customer. For Power Take-Offs products and parts, such warranty shall extend for a period of fifteen (15) months from the date of original shipment by NACD to the original customer, but not to exceed twelve (12) months of service or one thousand five hundred (1,500) hours of service, whichever occurs first. **The warranty set forth above is exclusive and North American Clutch & Driveline, Inc. makes no other warranty, express or implied. NACD hereby expressly disclaims any and all other warranties including warranties of merchantability or fitness for a particular purpose.**
- B. **Limitation of Remedies and Liability: The remedies provided herein are buyer's sole and exclusive remedies. In no event shall NACD be liable for any direct, indirect, special, punitive, incidental or consequential damages including, but not limited to, loss of revenue or profit, loss of use of the product, cost of capital, cost of substitute equipment or facilities, cost of cover, downtime costs, claims of any third parties, including buyers' customers, or any other costs whatsoever, whether based on contract, warranty, tort (including negligence) or any other legal theory.**

The above warranty and remedy are subject to the following terms and conditions:

1. Complete parts or products upon request must be returned transportation prepaid and also the claims submitted to NACD within sixty (60) days after completion of the in-warranty repair.
 2. The warranty is void if, in the opinion of NACD, the failure of the part or product resulted from abuse, neglect, improper maintenance or accident.
 3. The warranty is void if any modifications are made to any product or part without the prior written consent of NACD.
 4. The warranty is void unless the product or part is properly transported, stored and cared for from the date of shipment to the date placed in service.
 5. The warranty is void unless the product or part is properly installed and maintained within the rated capacity of the product or part with installations properly engineered and in accordance with the practices, methods and instructions approved or provided by NACD.
 6. The warranty is void unless all required replacement parts or products are of NACD origin or are NACD authorized replacement parts, and otherwise identical with components of the original equipment. Replacement parts or products not of NACD origin are not warranted by NACD.
- C. As considered for this warranty, the original customer and subsequent purchaser agree to indemnify and hold NACD harmless from and against all and any loss, liability, damages or expenses for injury to persons or property, including without limitation, the original customer's and subsequent purchaser's employees and property, due to their acts or omissions or the acts or omissions of their agents, and employees in the installation, transportation, maintenance, use and operation of said equipment.
- D. Only an NACD authorized factory representative shall have authority to assume any cost or expense in the service, repair or replacement of any part or product within the warranty period, except when such cost or expense is authorized in advance in writing by NACD.
- E. NACD reserves the right to improve the product through changes in design or materials without being obligated to incorporate such changes in products of prior manufacture. The original customer and subsequent purchasers will not use any such changes as evidence of insufficiency or inadequacy of prior designs or materials.
- F. If failure occurs within the warranty period, and constitutes a breach of warranty, repair or replacement parts will be furnished on a no-charge basis and these parts will be covered by the remainder of the unexpired warranty which remains in effect on the complete unit.

**Note: The Above constitutes the basic NACD General Limited Warranty and may be supplemented by additional published warranty terms dependent upon the product involved. Supplementary warranty terms are available upon request.*

North American Clutch & Driveline

800-383-9204

Rockford, Illinois

NOTICE

NACD makes no warranty or guarantee of any kind, expressed, implied or otherwise, with regard to the information contained within this manual. NACD assumes no responsibility for any errors that may appear in this manual and shall not be liable under any circumstances for incidental, consequential or punitive damages in connection with, or arising out of, the use of this manual. The information contained within this manual is subject to change without notice.



800-383-9204
815-282-9160 (fax)

North American Clutch & Driveline
Rockford, Illinois